

User Manual

Model: FI8919W

Wireless Outdoor Pan/Tilt IP Camera



Table of Contents

Security Warning.....	3
1 Overviews.....	3
1.1 Key Features.....	3
1.2 Read Before Use.....	4
1.3 Packing Contents.....	4
1.4 Physical Description.....	5
2 Surveillance Software GUI.....	6
2.1 Login Window.....	7
2.2 Surveillance Window.....	9
3 Advanced Camera Settings.....	16
3.1 Device Status.....	16
3.2 Alias Settings.....	17
3.3 Date & Time Settings.....	18
3.4 User Settings.....	18
3.5 Multi-Device Settings.....	19
3.6 Basic Network Settings.....	25
3.7 Wireless Settings.....	28
3.8 ADSL.....	32
3.9 UPnP Settings.....	33
3.10 DDNS Service Settings.....	33
3.11 Mail Service Settings.....	39
3.12 FTP Service Settings.....	40
3.13 Alarm Service Settings.....	43
3.14 PT Settings.....	48
3.15 Upgrade Device Firmware.....	48
3.16 Backup & Restore Settings.....	50
3.17 Restore Factory Settings.....	51
3.18 Reboot Device.....	51
3.19 Log.....	51
3.20 Back.....	52

4 APPENDIX..... 52

4.1 Frequently Asked Questions..... 52

4.2 Default Parameters..... 56

4.3 Specifications..... 57

4.4 Statement..... 58

5 OBTAINING TECHNICAL SUPPORT..... 59

Security Warning

1. Foscam cameras and NVRs require good security practices to safeguard your privacy. You should regularly change your camera or NVR password which is 8-10 numbers, letters, symbols combination.
2. You should update your camera or NVR regularly. Make sure your camera or NVR has the latest firmware installed for your specific model and better experience.

1 Overviews

FOSCAM FI8919W is an integrated wireless IP Camera with a color CMOS sensor. It combines a high quality digital video camera, with a powerful web server, to bring clear video to your desktop from anywhere on your local network or over the Internet.

With flexible 355-degree pan and 90-degree tilt, FI8919W gives users more comprehensive control over a monitored site. The IPCAM supports IR-CUT, when light conditions turns poor, the IR cut filter will be automatically removed to accept IR illumination. Meanwhile, the camera switches itself automatically from color to black and white, assuring optimal image quality at all times.

The IPCAM is based on the TCP/IP standard. There is a WEB server inside which could support Internet Explore. Therefore the management and maintenance of your device is simplified by using the network to achieve the remote configuration, start-up and to upgrade the firmware.

FI8919W is designed for outdoor surveillance applications such as gardens, courtyards or parks. Controlling the IPCAM and managing images are simplified by using the provided web interface across the network utilizing wireless connectivity.

FOSCAM provides Phone APPs for Android and iPhone users, please search “Foscam ip cam viewer” and install it through APP Store, then you can view your camera directly as a computer.

1.1 Key Features

- Powerful high-speed video protocol processor
- 300K Pixels
- IR night vision (Range: 15m)
- Pan 355 degree, tilt 90 degree
- Optimized MJPEG video compression for transmission
- Multi-level users' management and passwords definition

- Embedded Web Server for users to visit by IE
- Wi-Fi compliant with wireless standards IEEE 802.11b/g/n
- Embedded FOSCAM DDNS (dynamic domain name service) Service
- Motion detection activates alarm
- Supports image snapshot
- Supports multiple network protocols: HTTP/TCP/IP/UDP/SMTP/DDNS/SNTP/DHCP/FTP
- Supports WEP/WPA/WPA2 encryption
- Supports WPS(Wi-Fi Protected Set-up)
- Supports Daylight Saving Time
- Supports Gmail as sender on mail service settings
- Providing Phone APPs for Android and iPhone users
- Providing Central Management Software to manage or monitor multi-cameras

1.2 Read Before Use

Please first verify that all contents received are complete according to the Package Contents listed below. Before the Network Camera is installed, please carefully read and follow the instructions in the Quick Installation Guide to avoid damage due to faulty assembly and installation. This also ensures the product is used properly as intended.

1.3 Packing Contents

• IPCAM×1	• CD×1
• Wi-Fi Antenna×1	• Quick Installation Guide×1
• DC Power Supply×1	• Warranty Card×1
• Network Cable×1	

1.4 Physical Description

Front Panel

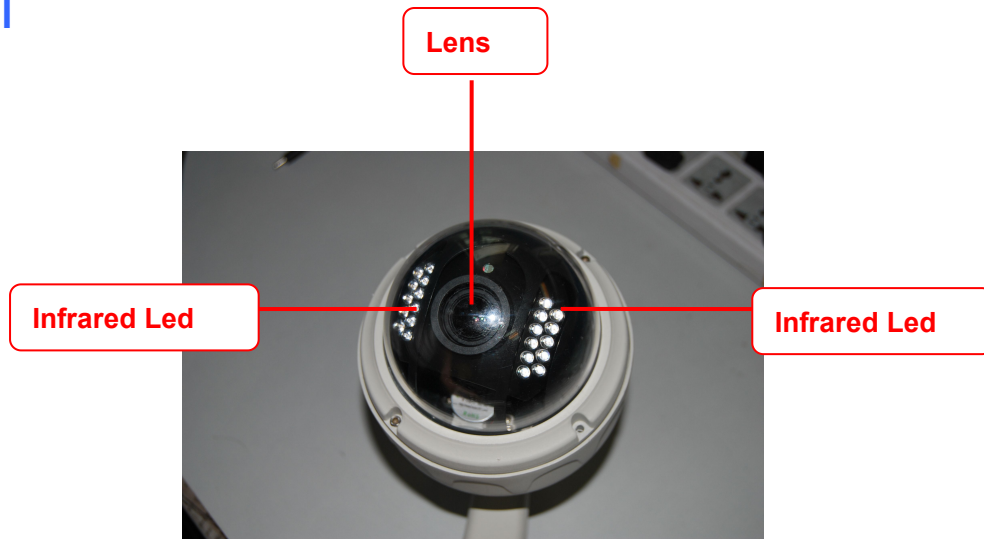


Figure 1.1

Infrared LED: 22 IR LEDs, night visibility up to 15 meters

LENS: CMOS sensor with fixed focus lens

Back View



Figure 1.2

WIFI Antenna: Wireless Antenna

Interface View

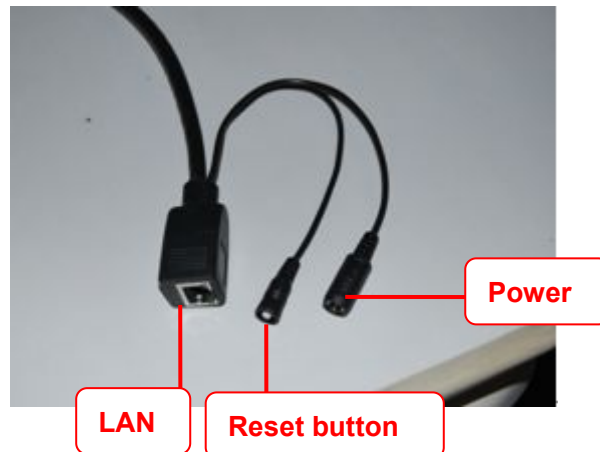


Figure 1.3

LAN: RJ-45/10-100 Base T

Power: DC 12V/2A Power supply

Reset button:

1) Press and hold down the RESET BUTTON about 10 seconds. when released the IP camera will be reset back to factory default settings. You must power on the camera before reset.

2) Press and hold down the RESET BUTTON about 4 seconds, then press the WPS button on the router, you can use the WPS function. (For more details: please read Wireless Settings in the User Manual)

Bottom View

There are some labels located on the body of the camera; this is an important feature of original Foscam cameras. If your camera does not have labels, it may be a clone one. Cloned Foscam cameras can not use original firmware and are not eligible for warranty or technical services.

2 Surveillance Software GUI

Please refer to the Quick Installation Guide if you install the camera at first time. After finishing quick installation, you can take time to learn the operation of the software.

2.1 Login Window



Figure 2.1

Section1 Select Language

FOSCAM camera supports up to multi-languages, such as English, Spanish, Deutsch and so on. You can select the language you need via pull down the dropdown toolbar and click on the language to switch.

Section2 User / Password

The default administrator username is admin with a blank password, please reset the password at first using and prevent unauthorized users login the camera.

NOTE:

When you log in for the first time, it will request that you modify the default username and/or password. Input the New username, New password and Confirm the password, click "Confirm" to complete the modification. You will now use the new username and password to log in to the camera in the future.

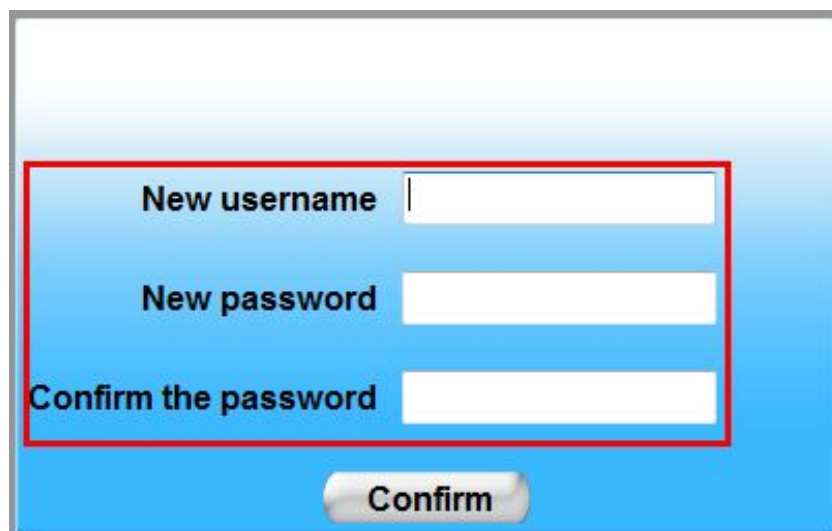


Figure 2.2

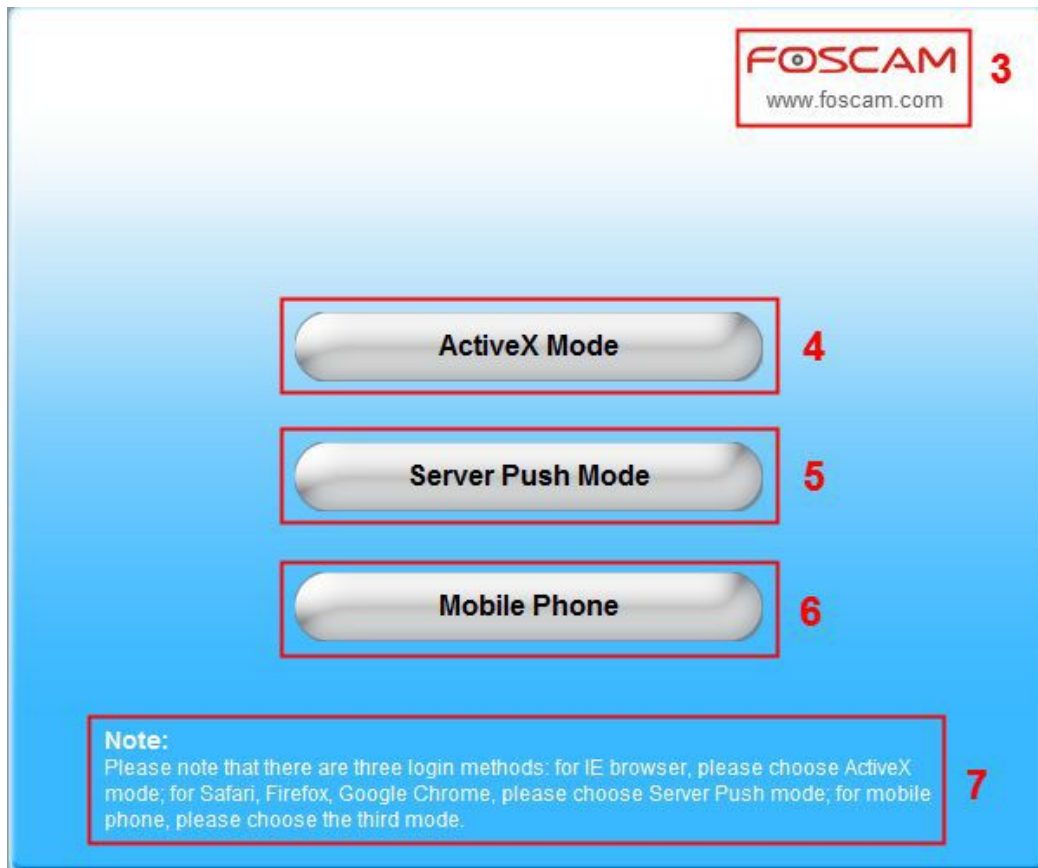


Figure 2.1

Section3 FOSCAM Website Link

There is an access link to Foscam website homepage, if you need tech support you can contact Foscam directly.

Section4 ActiveX Mode

If your PC is windows based OS, such as Windows XP, Windows7, Windows Vista and you are using IE-based browsers like IE8, IE9, please choose IE ActiveX Mode login mode.

Section5 Server Push Mode

If you are using non-IE based browser, like Firefox, Safari, Google Chrome please choose Server Push Mode.

Section6 Mobile Phone

If you are using the Mobile to access the camera, here you need to select Mobile Phone login mode.

Section7 Note

Note that when you login the camera, please select the corresponding login mode.

2.2 Surveillance Window

Select the ActiveX mode and you will enter the surveillance window.

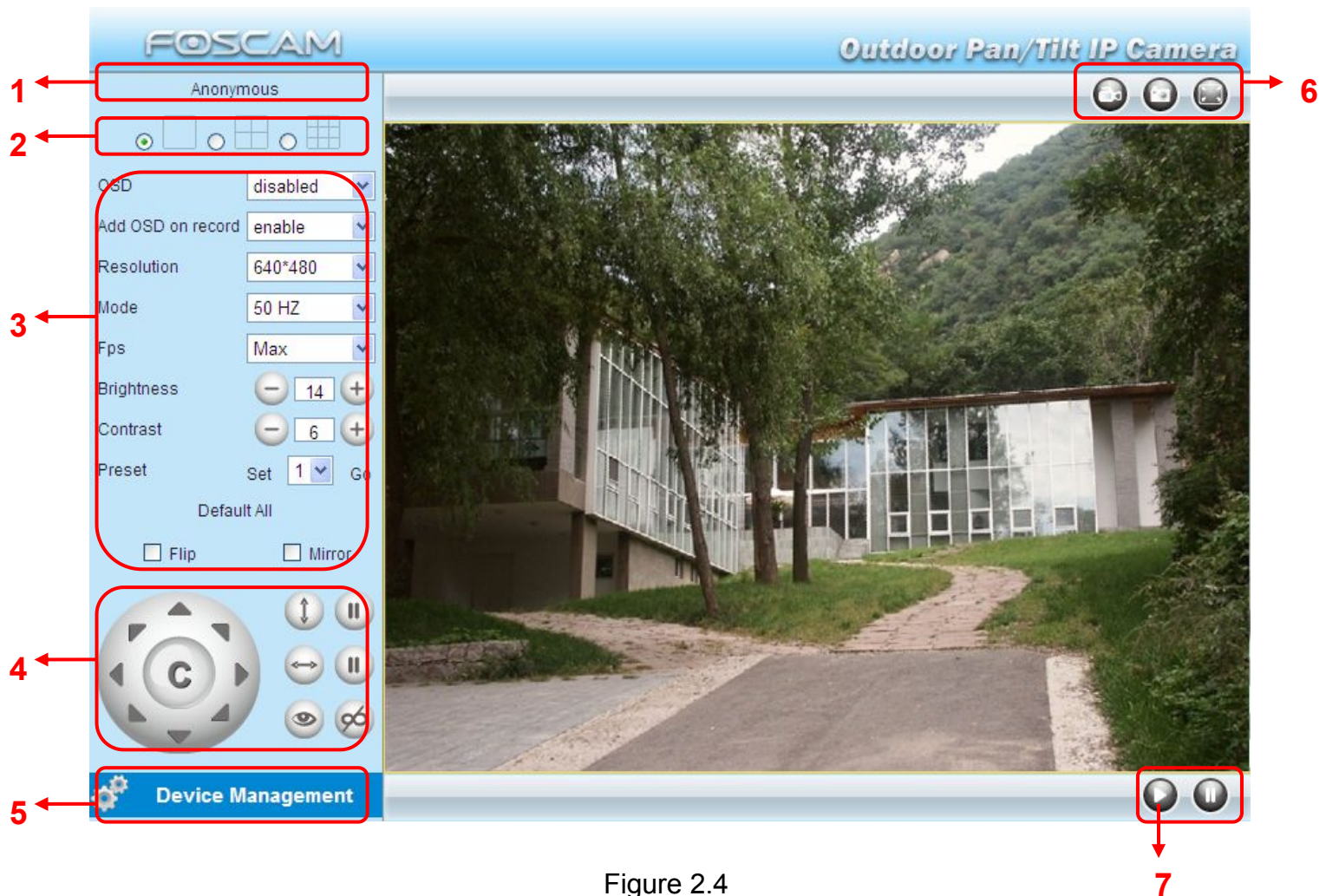


Figure 2.4

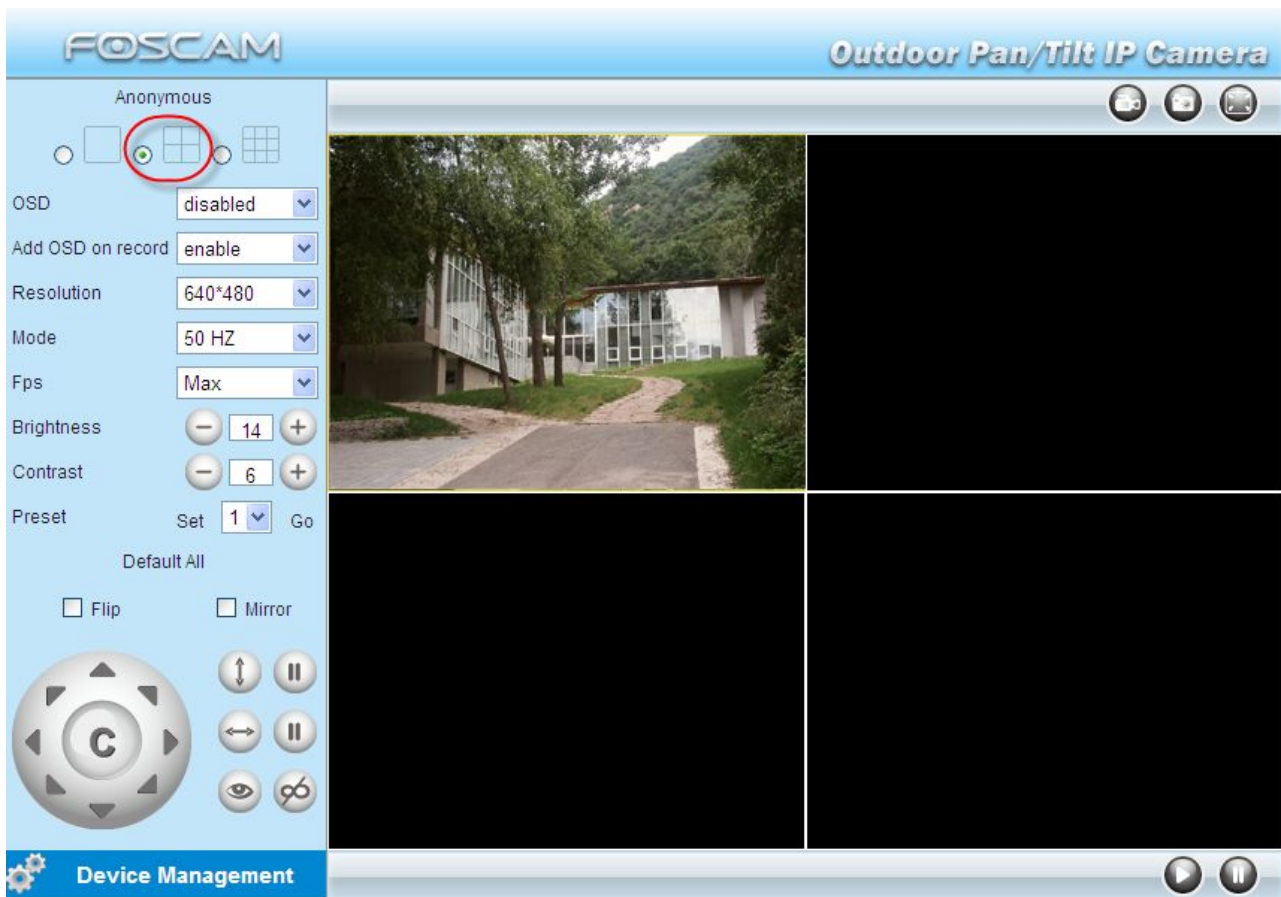
Section1 Device Name

Default device name is Anonymous. You can define a name for your camera as you like (Please go to chapter 3.1 and read how to set it)

Section2 Multi-Device Window



The firmware inside the camera supports up to maximum of 9 cameras being monitoring at the same time. You can add other cameras in multi-device setting (read chapter 3.5).



. Figure 2.5

Section3 Image Parameters Settings



OSD

OSD is used to add timestamp on the video. There are five text colors to choose from: Black, red, yellow, white, blue.

Add OSD on record

Select this option if you want to add a timestamp to recordings.

Resolution

- 1) 320x240-----QVGA
- 2) 640x480-----VGA

There are two resolutions, the bigger one (VGA) is 640x480 pixels, and the smaller one (QVGA) is 320x240 pixels. The bigger the resolution, the better of the image quality is, but the lower the frame rate is. If you are accessing the camera via internet and want to get more fluent video streaming, please select resolution QVGA 320x240.

Mode

- 1) 50HZ -----Indoor surveillance (Region: Europe, China)
- 2) 60HZ -----Indoor surveillance (Region: USA, Canada)
- 3) Outdoor-----Outdoor surveillance (Region: All over the world)

There are three options within the menu of Mode: 50HZ, 60HZ and Outdoor. It depends on the frequency of the electricity and surveillance model (indoors & outdoor). Please choose outdoor mode, when the camera was installed outside.

Fps

- 1) Max----- Maximum frame rate
- 2) 20fps, 15fps, 10fps, 5fps,4fps,3fps,2fps,1fps, 5fps, 1fps ,1/2fps,1/3fps,1/4fps,1/5fps----- customized frame rate

You can choose option within the menu of Fps to adjust the frame rate. It is often used in LAN network when you want to lower the frame rate, so that you can save more bandwidth.

Brightness

Default parameter is 6, you can adjust the brightness of the image by clicking plus or minus button.

Contrast

Default parameter is 4, you can adjust the contrast of the image by clicking plus or minus button.

Preset/Go

- 1) Preset-----Support 8 preset position, which is considered enough for DIY home & small business surveillance market

- 2) Set----- Click Set to save the position you need the camera to remember
- 3) Go----- Click Go to make the camera move the preset position
- 4) Number button from 1 to 8-----You can click the number button with preset position, and the camera will go to the preset position.

How to do preset position?

We can start preset settings from position 1.

Firstly, select no. 1 within the menu of Preset on the panel.

Secondly, move the camera and stop at a place where you want make preset position.

Thirdly, click set button to save it as position 1 and you have done preset of position 1.

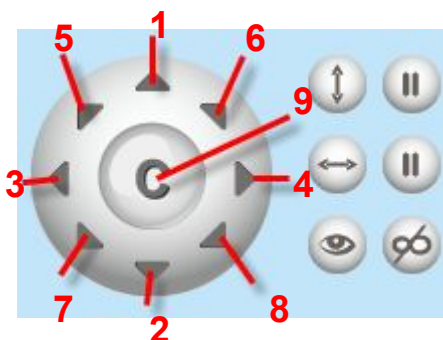
After that, you can select no. 2 within the menu of Preset on the panel, and move the camera and stop at another place, and set as preset position 2. You can do all the 8 preset positions with this method.

If you want to see the preset position you have set, such as the position 1, only select the set no.1 ,and click go button, the camera will go to position no.1.

Flip & Mirror


You can flip the image by enabling Flip button, or mirror the image by enabling Mirror button.

Section4 Pan/Tilt Control



- | | |
|---------------------------------|----------------------------------|
| 1-----Up control button, | 2-----Down control button, |
| 3-----Left control button, | 4-----Right control button, |
| 5----- Up-Left control button | 6----- Up-Right control button |
| 7----- Down-Left control button | 8----- Down-Right control button |
| 9-----Go to center | |




: Click this icon; camera will rotate up and down. Click  to stop.



: Click this icon; camera will rotate left and right. Click  to stop.

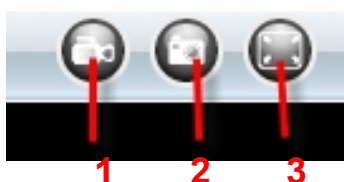



: Click this icon, all the IR lights will turn on. Click  to turn off them.

Section5 Device Management

Device Management -----Path to Administrator Control Panel, Click it, and it will lead to Administrator Control Panel.

Section6 Record & Snapshot & Full Screen Buttons

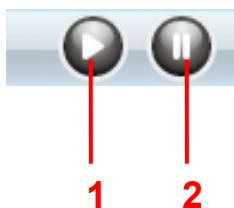


1-----Record Button Click it and it pop-up a path-setting window, you can select the storage path and the record file name. At the same time the record icon changes to , Click it again and stop recording.

2-----Snapshot Click it to make snapshot and it pop-up a window which picture you snapshot, right click in the window and save the picture to anywhere you want.

3-----Full Screen Click it to make full-screen or you can double click the surveillance screen to make full-screen.

Section7 Play/Stop Buttons



1-----Play Click it to play the video of the camera

2-----Stop Click it to stop the video of the camera

Onscreen Mouse Control

Double click right mouse on the surveillance window, then left click on the screen to indicate the camera move direction you prefer, press the left mouse and the camera's lens will move to the corresponding direction.. Double click right mouse again, cancel onscreen mouse control.

For example, double click right mouse, then left click on the up corner of the screen, you can see the arrow, press the left mouse, and the camera's lens will moving towards the up direction. Double click right mouse again, cancel onscreen mouse control.

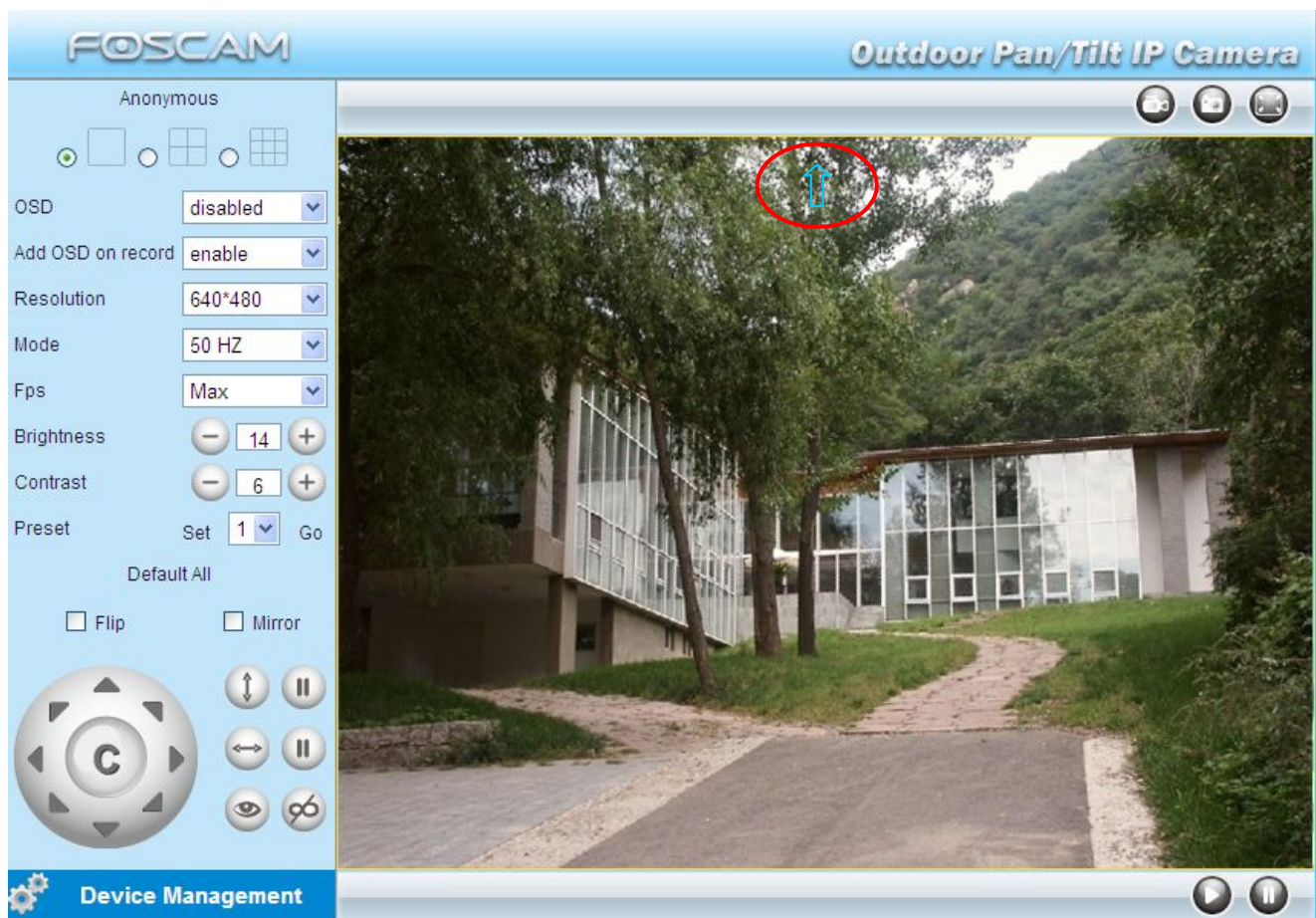


Figure 2.6



NOTE:

Record and multi-device function are controlled by ActiveX controller, therefore Firefox or Google Chrome, Safari browsers will not allow these functions.

For Firefox, Google Chrome, Safari, you should select the Server Push Mode and you can see the following screen:

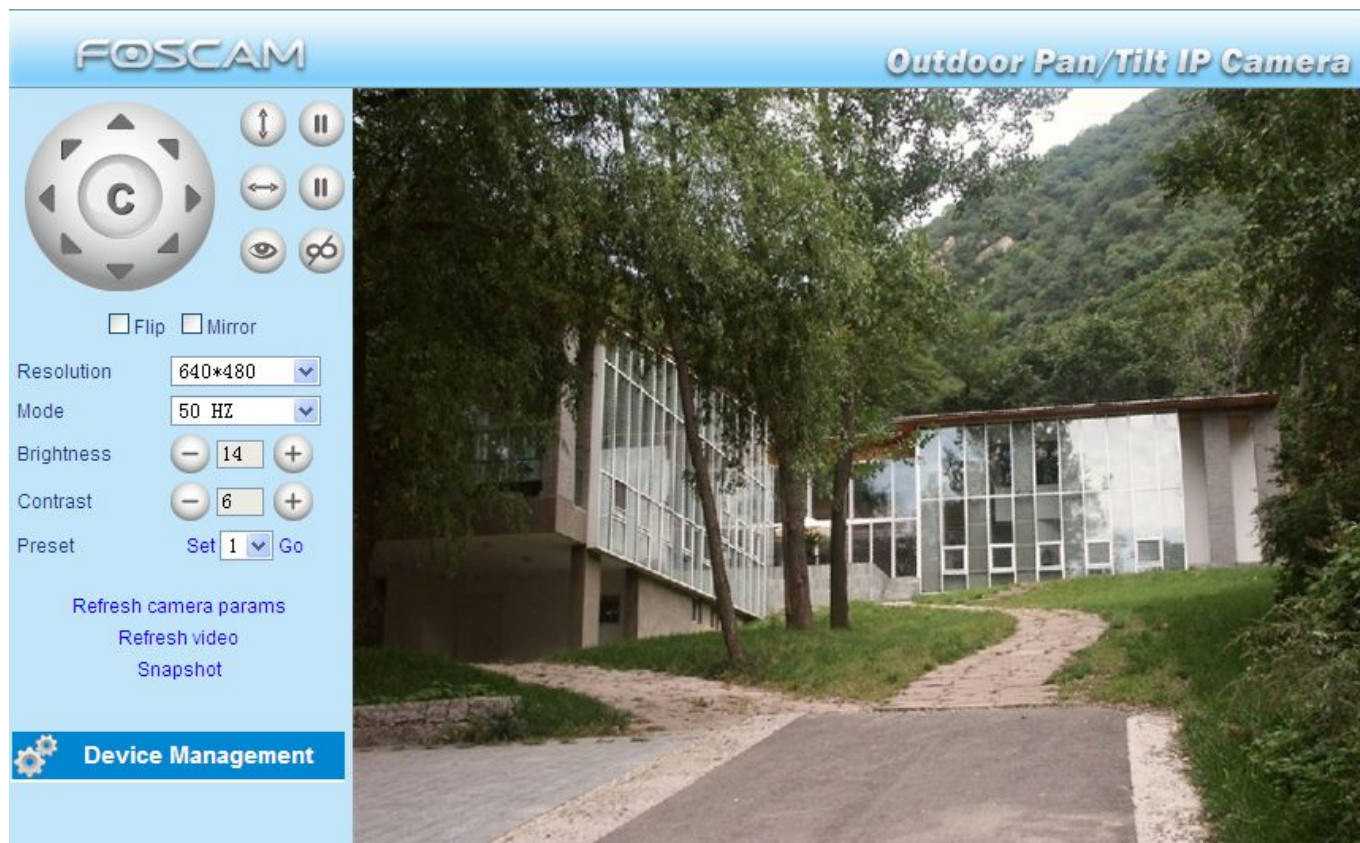


Figure 2.7

3 Advanced Camera Settings

Click the bar “Device Management”, goes to Administrator Control Panel to make advanced camera settings.

3.1 Device Status

FOSCAM Outdoor Pan/Tilt IP Camera															
<ul style="list-style-type: none"> Device Status Alias Settings Date & Time Settings Users Settings Multi-Device Settings Basic Network Settings Wireless LAN Settings ADSL Settings UPnP Settings DDNS Service Settings Mail Service Settings FTP Service Settings 	Device Status <table> <tr> <td>Device ID</td><td>0000003A2359</td></tr> <tr> <td>Device Firmware Version</td><td>11.37.2.65</td></tr> <tr> <td>Device Embedded Web UI Version</td><td>2.4.40.12</td></tr> <tr> <td>Alias</td><td>Anonymous</td></tr> <tr> <td>Alarm Status</td><td>None</td></tr> <tr> <td>DDNS Status</td><td>No Action</td></tr> <tr> <td>UPnP Status</td><td>No Action</td></tr> </table>	Device ID	0000003A2359	Device Firmware Version	11.37.2.65	Device Embedded Web UI Version	2.4.40.12	Alias	Anonymous	Alarm Status	None	DDNS Status	No Action	UPnP Status	No Action
Device ID	0000003A2359														
Device Firmware Version	11.37.2.65														
Device Embedded Web UI Version	2.4.40.12														
Alias	Anonymous														
Alarm Status	None														
DDNS Status	No Action														
UPnP Status	No Action														

Figure 3.1

- 1-----**Device ID** MAC ID of the camera by wired connection
- 2-----**Device Firmware Version** System Firmware version of the camera
- 3-----**Device Web UI Version** Web UI firmware version of the camera
- 4-----**Alias** Name of the camera
- 5-----**Alarm Status** The status of Alarm Service Setting
- 6-----**DDNS Status** The status of DDNS Setting
- 7-----**UPnP Status** The status of UPnP Setting

Another Way:



Double click the the icon “IP Camera.exe” , select the camera IP, right click and select the Basic Properties, you can also see the Firmware Version and MAC Address, such as the following screen:

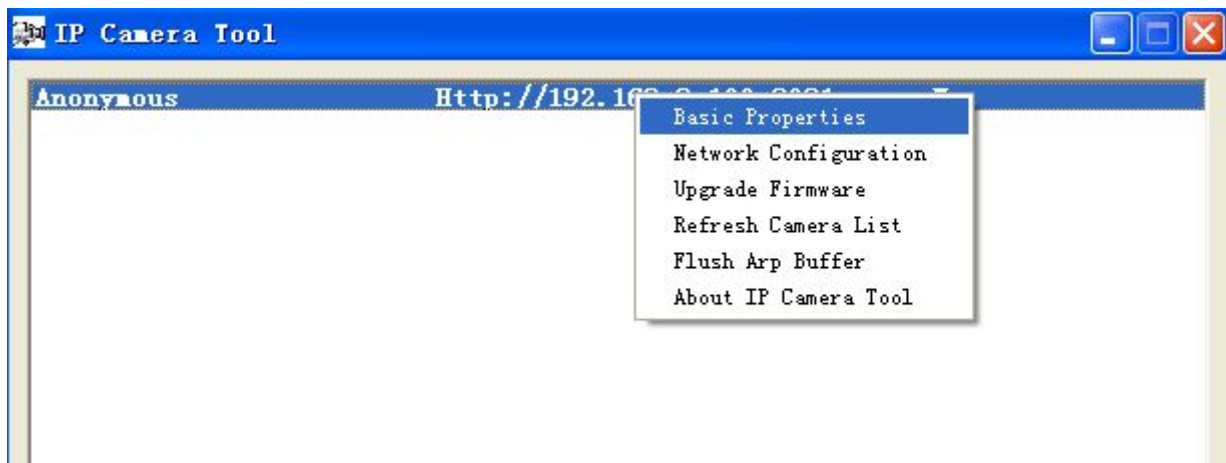


Figure 3.2

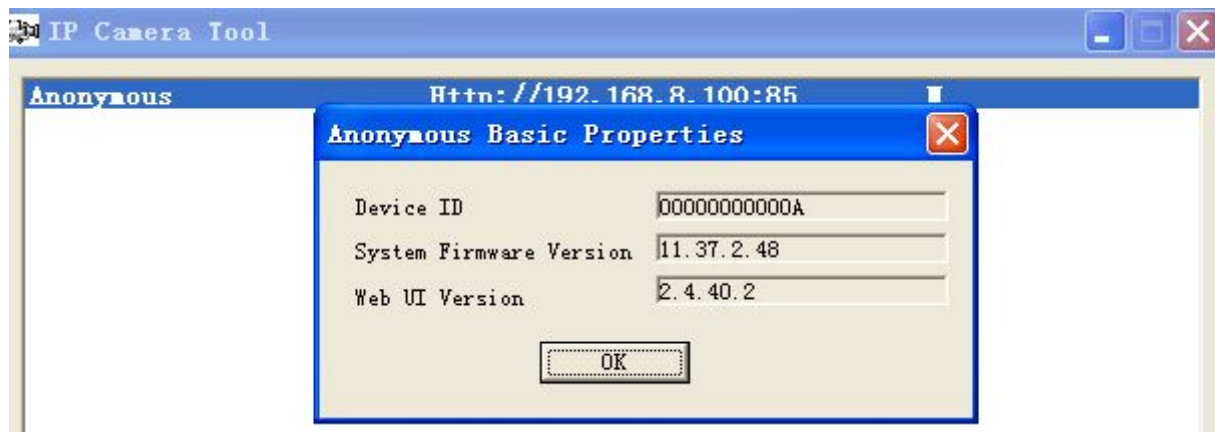


Figure 3.3

3.2 Alias Settings

Default alias is Anonymous. You can define a name for your camera here such as apple. Click **Submit** to save your changes. The alias name supports special characters.

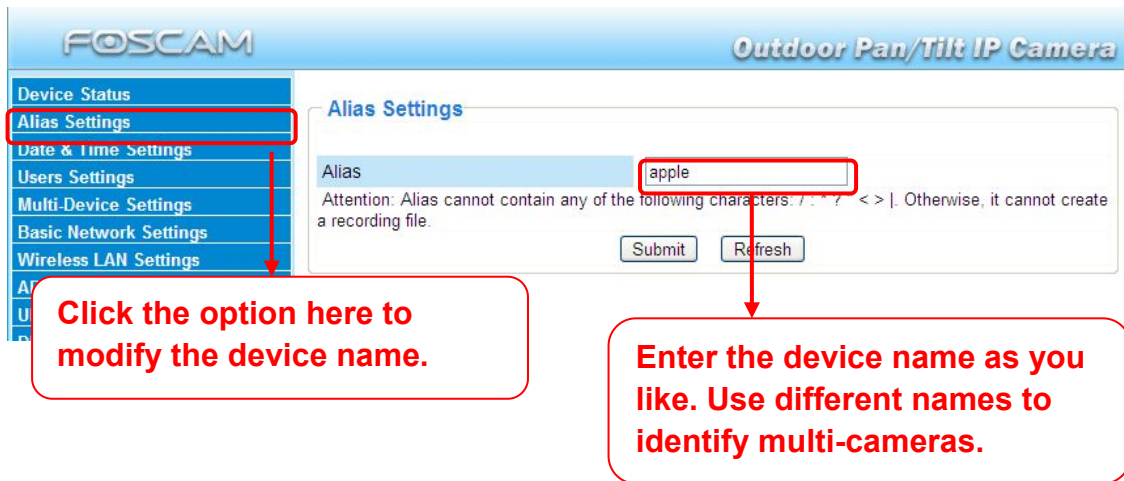


Figure 3.4

3.3 Date & Time Settings

Choose the time zone of your country. You can choose **Sync with NTP Server** or **Sync with PC Time**. If your country implements the **Daylight Saving Time**, that option can also be selected.



Figure 3.5

3.4 User Settings

Here you can create users and set permission levels, **visitor**, **operator** or **administrator**. Click **Submit** to save these settings. The camera will reboot.

FOSCAM Outdoor Pan/Tilt IP Camera

Users Settings

User	Password	Group
admin		Administrator
user	Operator
guest		Visitor
		Administrator
		Visitor
		Visitor
		Visitor
		Visitor
		Visitor

You can set different permission levels, but at least one administrator.

Set Alarm Record Path

C:\Users\Public\Documents Browse...

Figure 3.6

Here you can also set one important file locations for the camera, the **Alarm Record Path**. Simply click **Browse** and choose the path to the required folder.

The **Alarm Record Path** location is used to store automatically recorded files when the camera is activated by motion. The default path for **Alarm Record Path** is C:\Documents and Settings\All Users\Documents.

NOTE: In Windows7 or Vista, if you cannot set the paths.:

Windows7 or Vista's security level is higher than Windows XP/2000. For "set record path" function, user should add the Device IP address to the Internet Explorer's 'Trusted sites' first. The step is: IE browser → Tool → Internet Proper → Security → Trusted sites → Sites → Add

3.5 Multi-Device Settings

If you want to view multi-surveillance screens on one window, you need to login one camera, and set it as the main device, and do Multi-Device Settings, add other cameras to the first one camera. Before you do multi-cams settings, you need to assign different port such as 81, 82, 83, 84, 85, 86, 87, 88 to the cameras if there is 8 cams installed.

The firmware within the camera can support a maximum of 9 devices monitoring all at the same time.

3.5.1 Add cameras in LAN

In Multi-Device Settings page, you can see all devices searched in LAN. The 1st Device is the

default one. You can add more cameras in the list in LAN for monitoring. The camera's software supports up to 9 IP Cameras online simultaneously. Click **The 2nd Device** and click the item in the **Device List in LAN**, the Alias, Host and Http Port will be filled in the boxes below automatically. Enter the correct username and password then click **Add**. Add more cameras in the same way. After all cameras have been added, choose **Submit**.

Multi-Device Settings

Device List in LAN	Foscamdemo8918(192.168.11.206) Foscamdemo FI8910W(192.168.11.211) FoscamdemoFI8916W(192.168.11.208) Anonymous(192.168.11.169)
	<input type="button" value="Refresh"/>
The 1st Device	This Device
The 2nd Device	None
	Alias: FoscamdemoFI8916W
	Host: 192.168.11.208
	HTTP Port: 8916
	User: admin
	Password: <input type="password"/>
	<input type="button" value="Add"/> <input type="button" value="Remove"/>
The 3rd Device	None
The 4th Device	None
The 5th Device	None
The 6th Device	None
The 7th Device	None

1 Click it, alias, host and HTTP Port will be filled in the following boxes automatically
 2 Enter the User name and password of the 2nd camera
 3 Click Add to take effect

Figure 3.7a

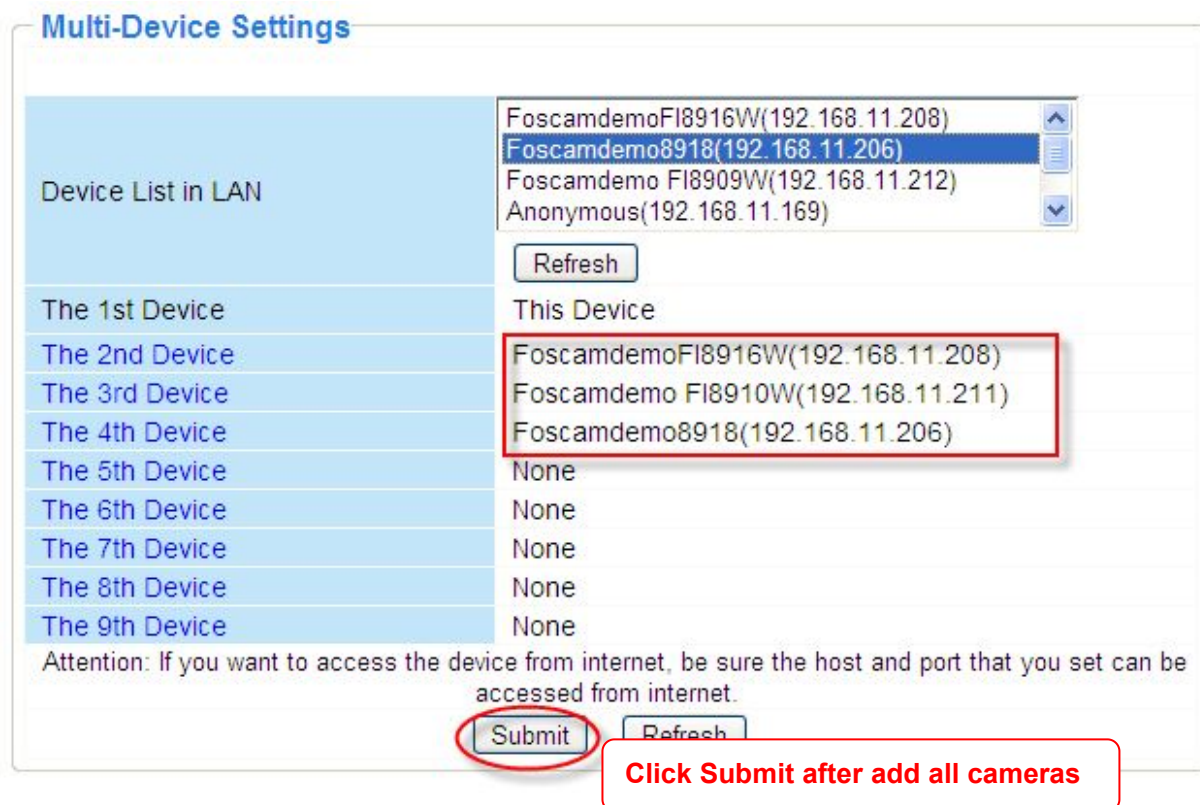


Figure 3.7b

Back to **Surveillance Windows**, and click Four Windows option, you will see four cameras you added.



Figure 3.8

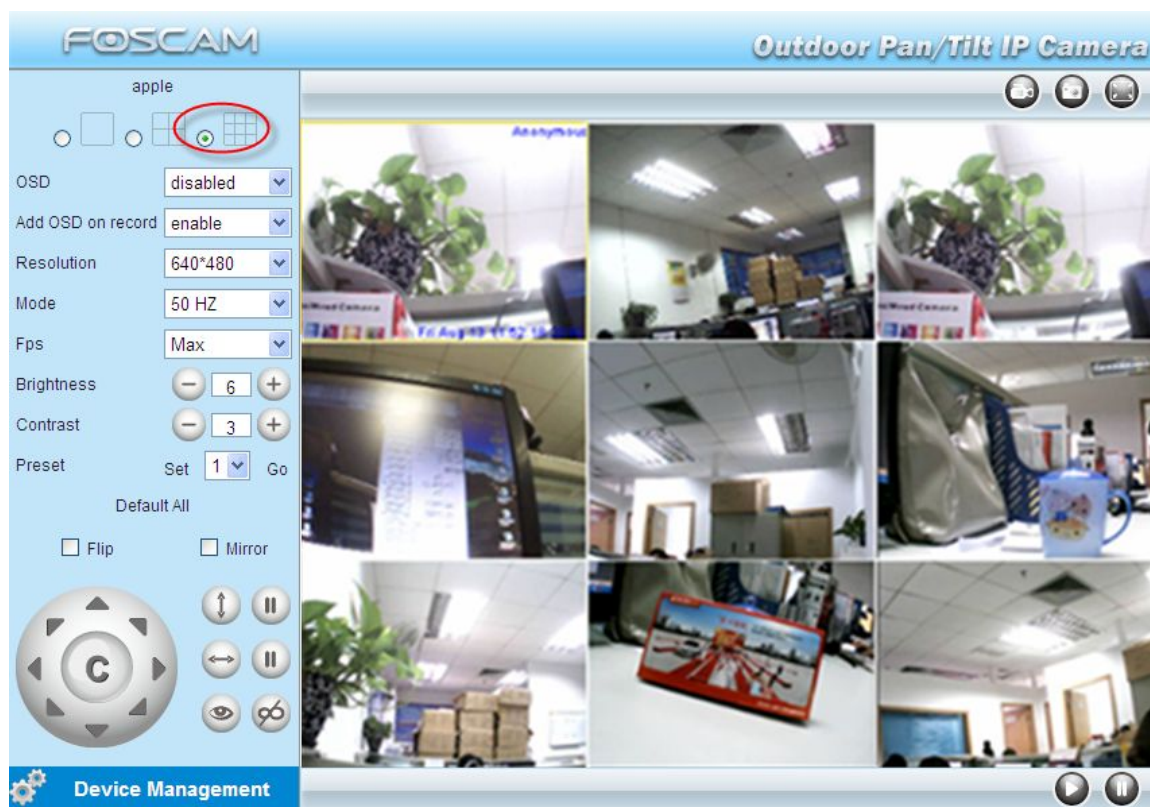


Figure 3.9

3.5.2 Add cameras in WAN

If you want to view all cameras via the internet(remote computer), you will need to add them using DDNS domain name. Firstly, make sure all of the cameras you added can be accessed through the internet. (Read **How to configure DDNS settings in chapter 3.10**)

Login to the first camera using a DDNS domain name and port.

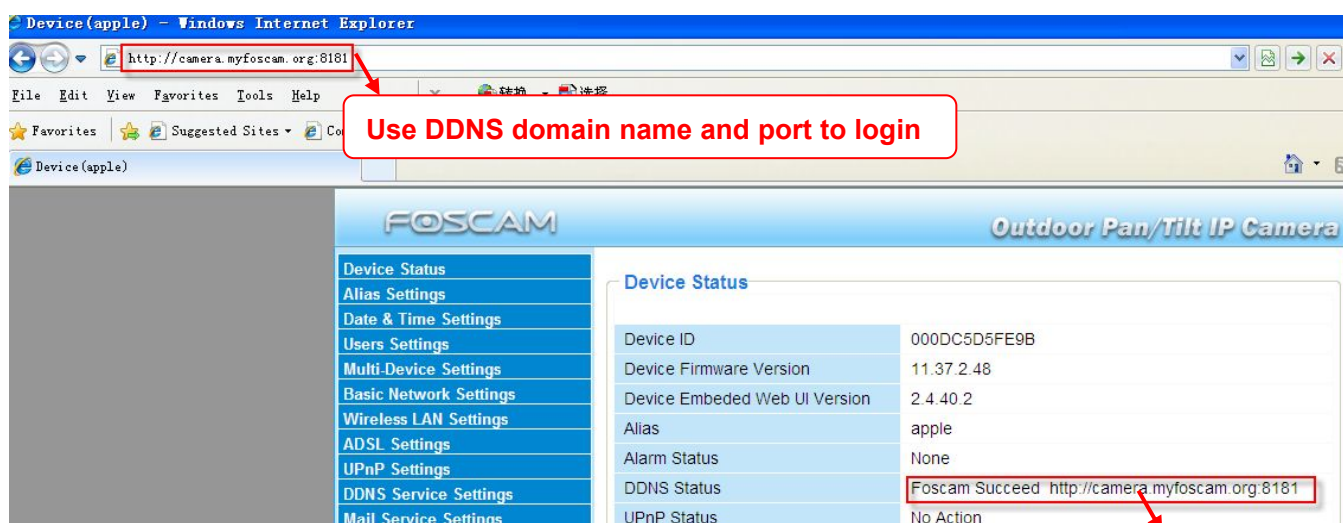


Figure 3.10

If you have several cameras, you can use the same DDNS domain name; you only need to set a different port number for each camera.

Click **Multi-Device Settings**. Choose **The 2nd Device**. Fill in the 2nd camera's name, DDNS domain name, port number. Enter user name and password and then choose Add.

NOTE: Here the Host must be entered as the second camera's DDNS domain name, not its LAN IP.

The screenshot shows the 'Multi-Device Settings' window. At the top, there is a 'Device List in LAN' section with a list of devices: 'Foscamdemo FI8909W(192.168.11.212)', 'Foscamdemo FI8904W(192.168.11.214)', 'Anonymous(192.168.11.169)' (selected), and 'Foscamdemo FI8910W(192.168.11.211)'. Below this is a 'Refresh' button. The main table has columns for device selection and configuration. 'The 2nd Device' is selected. The configuration fields for 'The 2nd Device' are: 'Alias' (sarah), 'Host' (ipcam.dyndns.org), 'HTTP Port' (8090), 'User' (admin), and 'Password' (masked with dots). Red boxes and arrows highlight these fields: 1 points to the Alias field, 2 points to the Host field, 3 points to the User field, and 4 points to the Add button. The 'Add' button is circled in red. Below the configuration fields are 'Add' and 'Remove' buttons. The bottom of the table shows 'The 3rd Device' through 'The 7th Device', all with 'None' in the configuration column.

Device Selection	Configuration
The 1st Device	This Device
The 2nd Device	None
	Alias: sarah
	Host: ipcam.dyndns.org
	HTTP Port: 8090
	User: admin
	Password: ●●●
	[Add] [Remove]
The 3rd Device	None
The 4th Device	None
The 5th Device	None
The 6th Device	None
The 7th Device	None

Figure 3.11

- 1----- The 2nd camera's name
- 2----- Fill in the 2nd camera's DDNS host not LAN IP
- 3 ---- Enter the 2nd camera's user name and password
- 4---- Click Add button and to take effect

Add the other cameras in the same way. Click **Submit** to save.

Multi-Device Settings

Device List in LAN	
	FoscamdemoFI8916W(192.168.11.208)
	Anonymous(192.168.11.169)
	Foscamdemo8918(192.168.11.206)
	Foscamdemo FI8904W(192.168.11.214)
	<input type="button" value="Refresh"/>
The 1st Device	This Device
The 2nd Device	sarah(ipcam.dyndns.org)
The 3rd Device	apple(ipcam.myfoscam.org)
The 4th Device	linia(test1.myfoscam.org)
The 5th Device	None
The 6th Device	None
The 7th Device	None
The 8th Device	None
The 9th Device	None

Attention: If you want to access the device from internet, be sure the host and port that you set can be accessed from internet.

Click submit after finishing all settings

Figure 3.12

Return to video window. You will see all of the cameras accessible through the internet. When you are away from home, you can use the first camera's DDNS domain name and port to view all the cameras via internet.

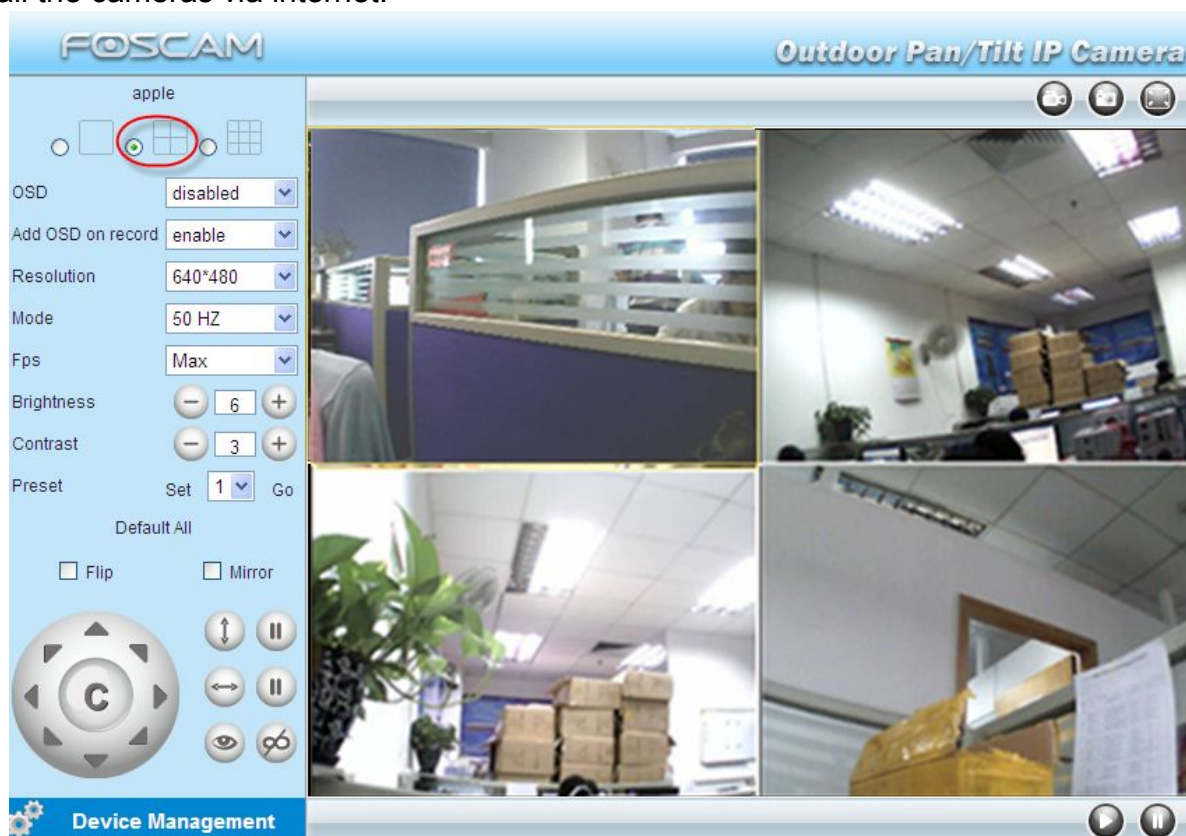


Figure 3.13

3.6 Basic Network Settings

If you want to set a static IP for the camera, select **Basic Network Settings**. Keep the camera in the same subnet of your router or computer.

Basic Network Settings	
Obtain IP from DHCP Server	<input type="checkbox"/>
IP Address	192.168.0.109
Subnet Mask	255.255.255.0
Gateway	192.168.0.1
DNS Server	192.168.0.1
HTTP Port	8181
<input type="button" value="Submit"/> <input type="button" value="Refresh"/>	

Figure 3.14

Changing settings here is the same as using the Equipment Search Tool.

It is recommended that you use the subnet mask, gateway and DNS server from your locally attached PC. If you don't know the subnet mask, gateway and DNS server, you can check your computer's local area connection as follows:

Control Panel → Network Connections → Local Area Connections → Choose Support→Details.

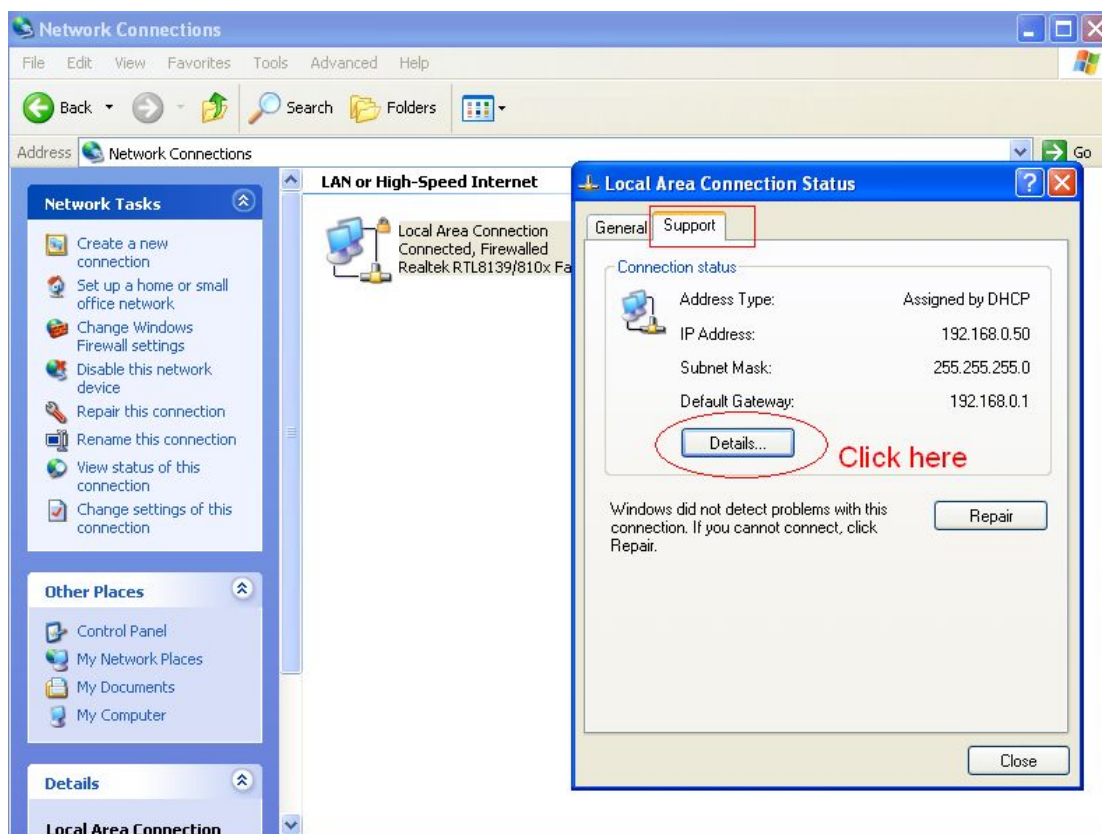


Figure 3.15

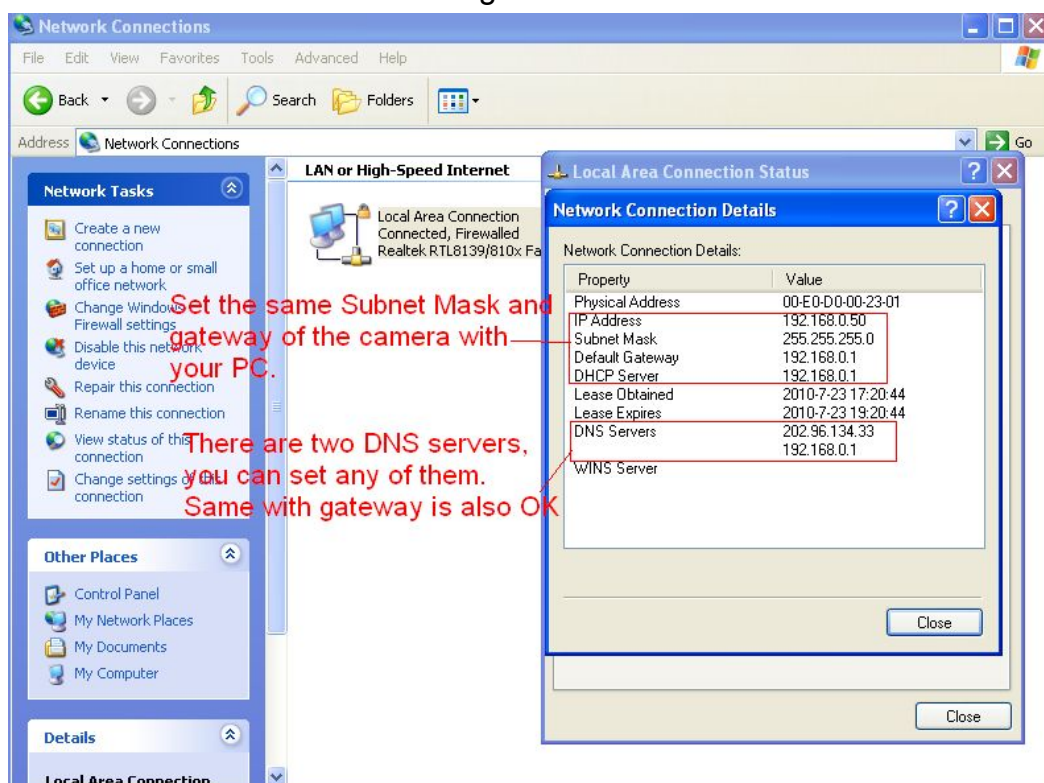


Figure 3.16

If you don't know the DNS server, you can use the same settings as the Default Gateway.

Another way to change the camera's LAN IP and HTTP Port no.

Open the Equipment Search Tool, select the camera you want to change the port no, right click on the IP address link, and goes to Option "Network Configuration", it pops up another dialogue showed as the following screen



Figure 3.17

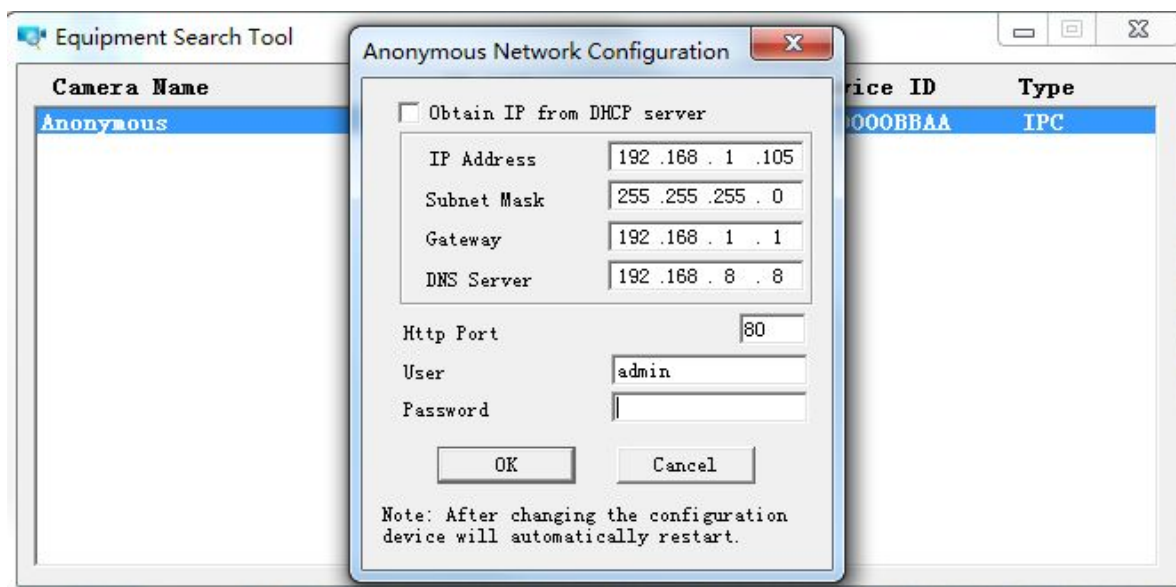


Figure 3.18

IP Address: Fill in the IP address assigned and make sure it is in the same subnet as your computer or router. (I.e. the first three sections are the same)

Subnet Mask: The default subnet mask of the equipment in our LAN is: 255.255.255.0. You can find the subnet mask in the basic information of your router or the locally-attached of your PC.

Gateway: Make sure it is in the same subnet with PC's IP address. The gateway is your router's LAN IP.

DNS Server: IP address of your ISP network provider. You can find the DNS server in your router or check the locally-attached address of your computer. Your PC contains your PC's IP address, gateway and DNS server. Normally, there are two DNS servers. Here you can also set

the DNS server the same with gateway.

Http Port: The default Lan port is 80.You can set another port number, such as port 8005, 8100.etc.

User&Password: Default administrator user name is admin with no password.



NOTE:

If the prompt “Subnet doesn’t match, dbclick to change!” appears, please enable DHCP set camera’s IP address and gateway once again.

3.7 Wireless Settings

Wireless Lan Settings support three modes: Infra(Do wireless lan settings manually) and WPS (Wi-Fi Protected Set-up) and Adhoc..

If your router does not support WPS function,please go to chapter 3.7.1 and make wireless connection settings manually.

If your router supports WPS function, please go to chapter 3.7.2 and make wireless connection settings quickly.

If there is no wireless router, please go to chapter 3.7.3 and connect the IPCAM directly to a host in a peer_to_peer environment.

3.7.1 Infrastructure Mode

Step_01) Please choose “**Device Management**” and goes to the option **Wireless LAN Settings** , click “**Wireless LAN Settings**”. Then enable “**Using Wireless LAN**”.

Click the Scan button and the camera will detect all WIFI devices around the area. It should also display your router in the list.

Wireless LAN Settings

Wireless Network List

- lucy[14e6e462d576] infra
- dlink[f07d685630dc] infra
- test1[54e6fc35f13a] infra WEP
- cisco[00259cb1df9a] infra WEP

Scan

Click Scan Button to search WIFI device

Using Wireless LAN ☒

SSID

Network Type Infra

Encryption None

Submit Refresh

Figure 3.19

Step 02) Click the SSID of your router in the list, the corresponding information (SSID & Encryption) will be filled in the following boxes automatically.

You will only need to fill in the share key. Make sure that SSID, Encryption and share key you filled in for the camera are exactly the same for your router.

Wireless LAN Settings

Wireless Network List

- lucy[14e6e462d576] infra
- dlink[f07d685630dc] infra
- test1[54e6fc35f13a] infra WEP
- cisco[00259cb1df9a] infra WEP**

Scan

Click the SSID of router and SSID, Encryption will be filled in the following box automatically

Using Wireless LAN ☒

SSID cisco

Network Type Infra

Encryption WPA2 Personal (AES)

Share Key

Enter the same share key with your router

Submit Refresh

Figure 3.20

Step 03) Please click on the **Submit** button after all settings have been entered, the camera will reboot. After the camera has completed the reboot process, wait 10 seconds and disconnect the network cable.

The LAN IP address will disappear on the window of Equipment Search Tool when the camera

gets restarted. Just wait for around 1 minute, the camera will get wireless connection, and the LAN IP of the camera will be showed again on the window of the Equipment Search Tool. You have done wireless connection of the camera successfully. If the camera has a dynamic IP, after the wireless settings, the IP will be changed.

Note

If fail to make WiFi connection, please refer to seller or us for help.

3.7.2 WPS (Wi-Fi Protected Set-up)

Step 01) Please press and hold the RESET button for **four seconds**. .



Step 02) Press the WPS button on your router **within 60 seconds**. The WPS button is usually on the back or side of your router. On some routers, you may need to log in to the web interface and click on an on-screen button to activate the WPS feature. If you are not sure where the WPS buttons is on your router, please refer to your router's User Manual.

The camera will automatically create a secure wireless connection to your router. If you have plugged in the network cable, please plug it out. While connecting, the green network light will blink quickly and the wireless settings will take effect. The Equipment Search Tool will search the camera's LAN IP. Make sure the PC and the camera share the same subnet.

Note

1 During the WPS Settings, you must press the Reset button only for four seconds, or else, the camera may be reset back to factory default settings if you press and hold on the reset button above 10 seconds.

2 The security mode of router cannot be WEP, or else the WPS settings may be failed.

3.7.3 Adhoc Mode

Under this mode, the IPCAM will directly connect to a host in a peer_to_peer environment. Make sure the PC has plugged in the wireless network card.

Step 01) Enable wireless and choose Adhoc mode.

Fill in a SSID to identify the IPCAM and then set the security mode, you can choose none or others. Click Apply.

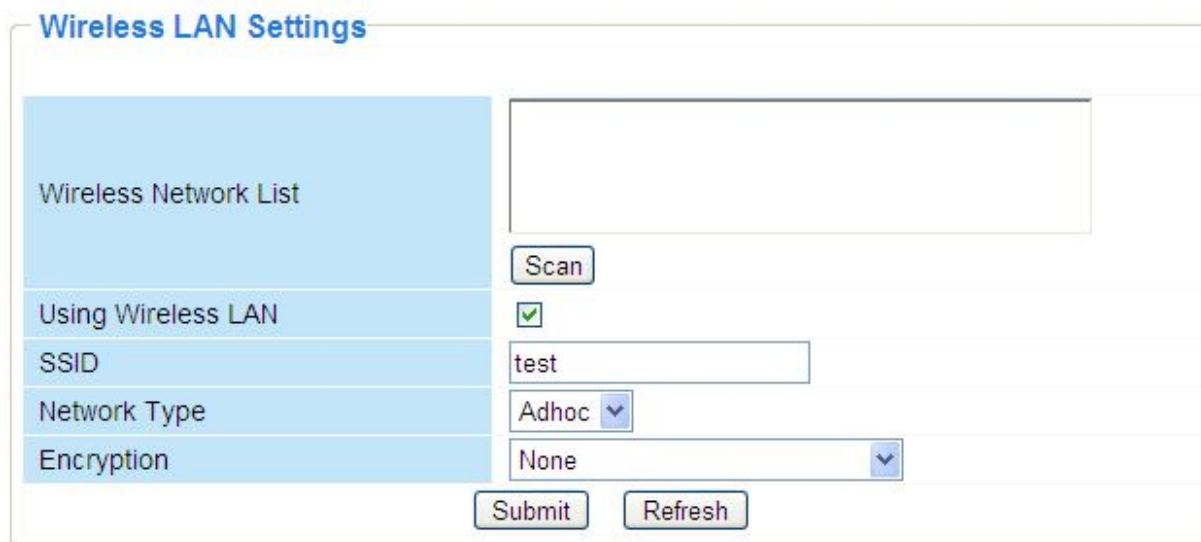


Figure 3.21

Step 02) Plug out the network cable and the camera will restart.

Open the wireless network card of PC and search the wireless network around the area. You can find the SSID you filled for the camera .

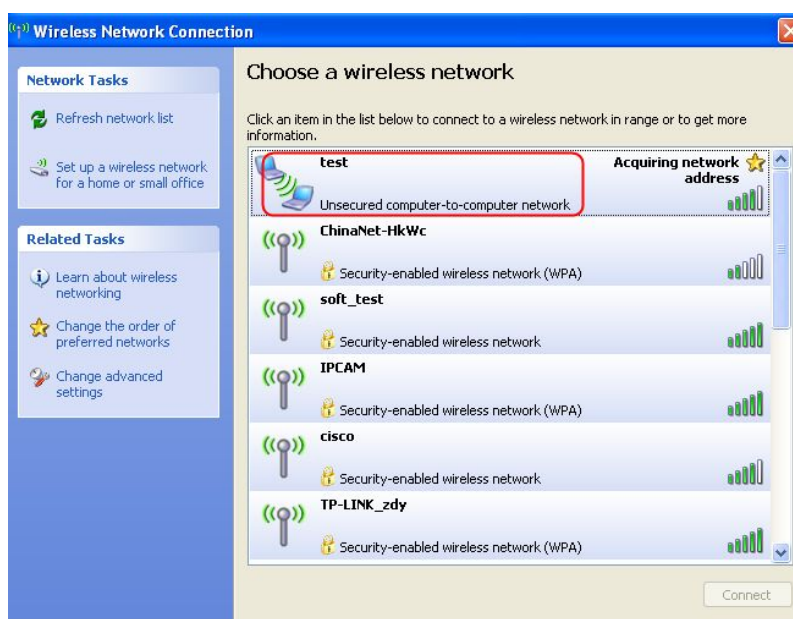


Figure 3.22

Step 03) Disabled the wired connection of the PC. Select the SSID you filled at Figure3.21 for your camera and enter the same key with your camera. Make sure PC and Camera share the same subnet.

Open the Equipment Search Tool, you can search the camera LAN IP again.

3.8 ADSL

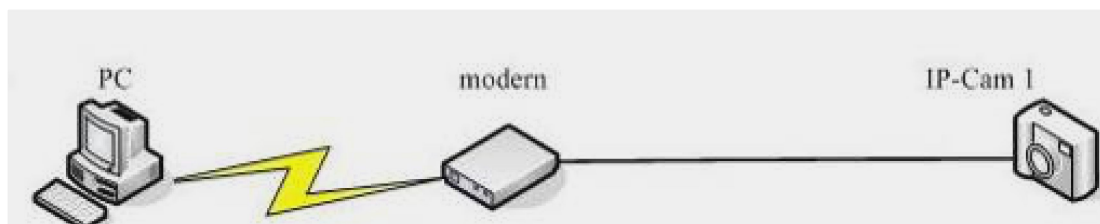


Figure 3.23

If you are connecting the camera directly to a ADSL modem, you can do ADSL settings with your ADSL account & password provided by the ISP, then make the camera connected to the network.

FOSCAM Outdoor Pan/Tilt IP Camera

- Device Status
- Alias Settings
- Date & Time Settings
- Users Settings
- Multi-Device Settings
- Basic Network Settings
- Wireless LAN Settings
- ADSL Settings
- UPnP Settings
- DDNS Settings

ADSL Settings

Using ADSL Dialup ☒

ADSL User

ADSL Password

Enter the ADSL user and password.

Figure 3.24

3.9 UPnP Settings

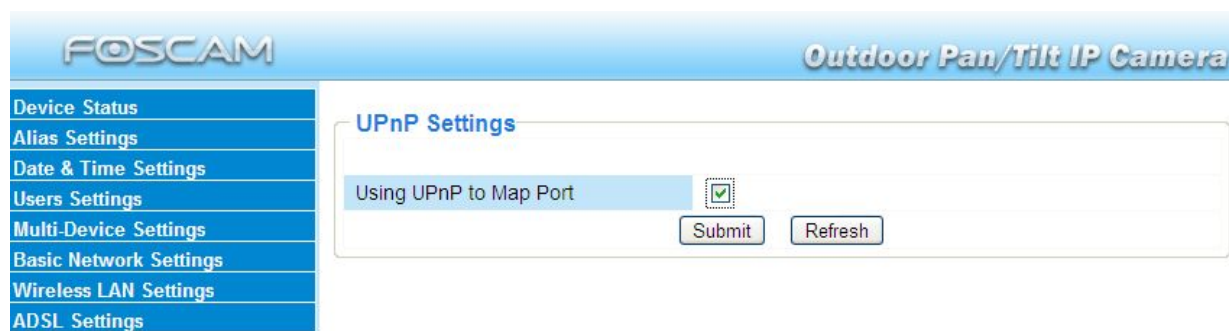
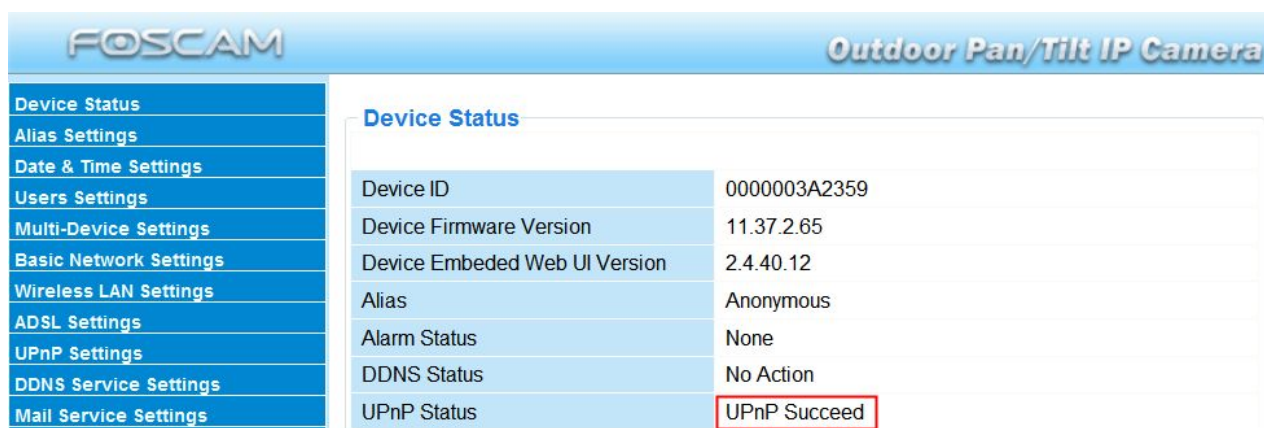


Figure 3.25

The default UPnP status is closed. You can select the checkbox and open UPnP, then the camera's software will be configured for port forwarding. Back to the "Device Status" panel, you can see the UPnP status:



There may be issues with your routers security settings, and sometimes may error. We recommend you configure port forwarding manually on your router .

3.10 DDNS Service Settings

FOSCAM camera has embedded a unique DDNS domain name when producing, and you can directly use the domain name, you can also use the third party domain name.

FOSCAM domain name

Here take **camera.myfoscam.org** for example. Go to option of **DDNS Service Settings** on the administrator panel, you can see the domain name.

Please **enable** the FOSCAM DDNS name first.

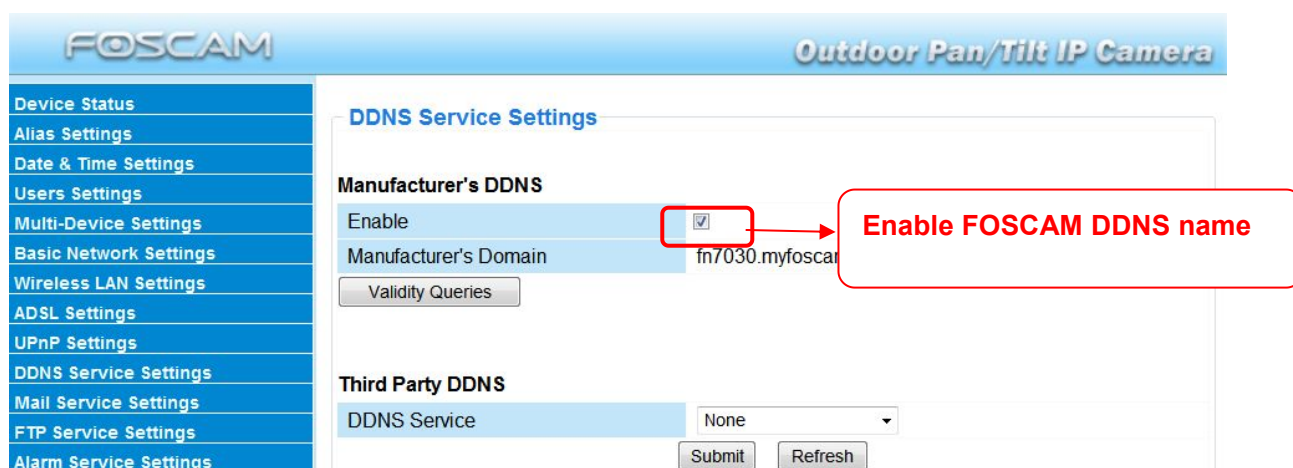


Figure 3.26

Enable: Open or close the FOSCAM domain name. The default status of FOSCAM domain name is open.

Validity Queries: Check the validity of embedded domain name.

Now you can use [http:// Domain name + HTTP Port](http://Domain name + HTTP Port) to access the camera via internet. Take hostname camera.myfoscam.org and **HTTP Port no. 88** for example, the accessing link of the camera via internet would be [http:// camera.myfoscam.org:88](http://camera.myfoscam.org:88)

Note: If you want to use the manufacturer's domain name, please select None as the Third Party DDNS and enable the Manufacturer's domain name, then click submit

Third Party Domain Name Settings

User can also use third part DDNS, such as www.no-ip.com, www.dyndns.com

Here take www.no-ip.com for example:

① **Step 1, Go to the website www.no-ip.com to create a free hostname**

Firstly: Login on www.no-ip.com and click No-IP Free to register.



Figure 3.27

Please register an account step by step according to instructions on www.no-ip.com

After registration, please login your email which used to register. You will receive an email from website, please click the link to activate your ACCOUNT as indicated in email.

Secondly: Login the link with the registered username and password to create your domain name.

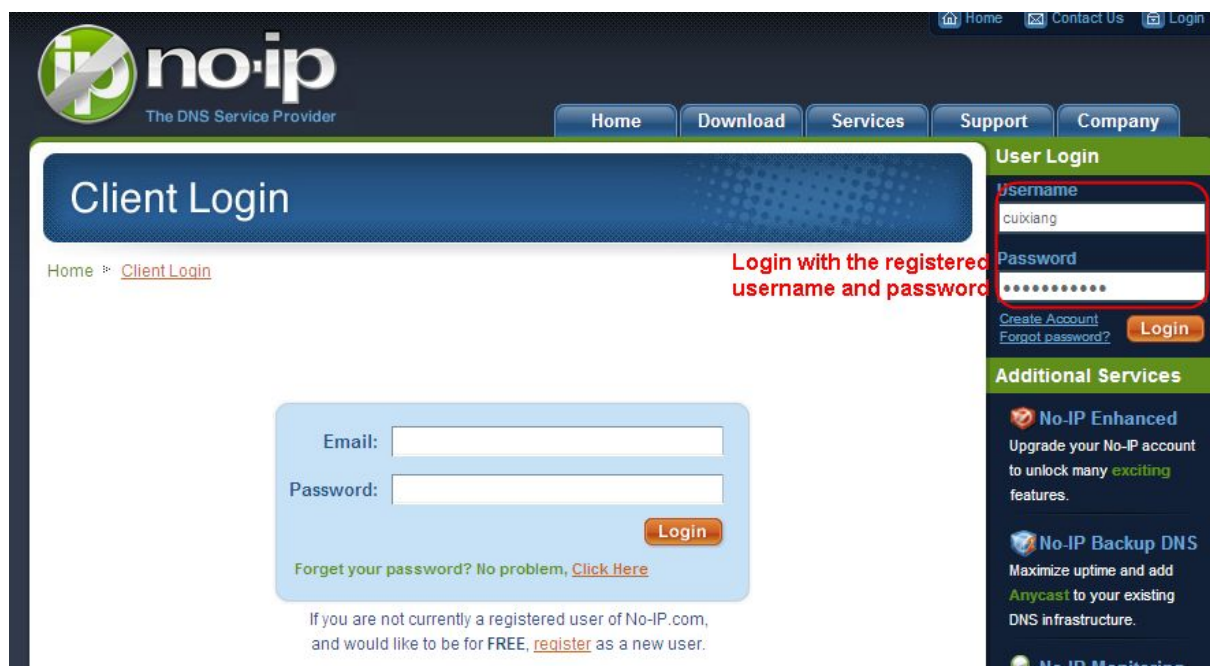


Figure 3.28

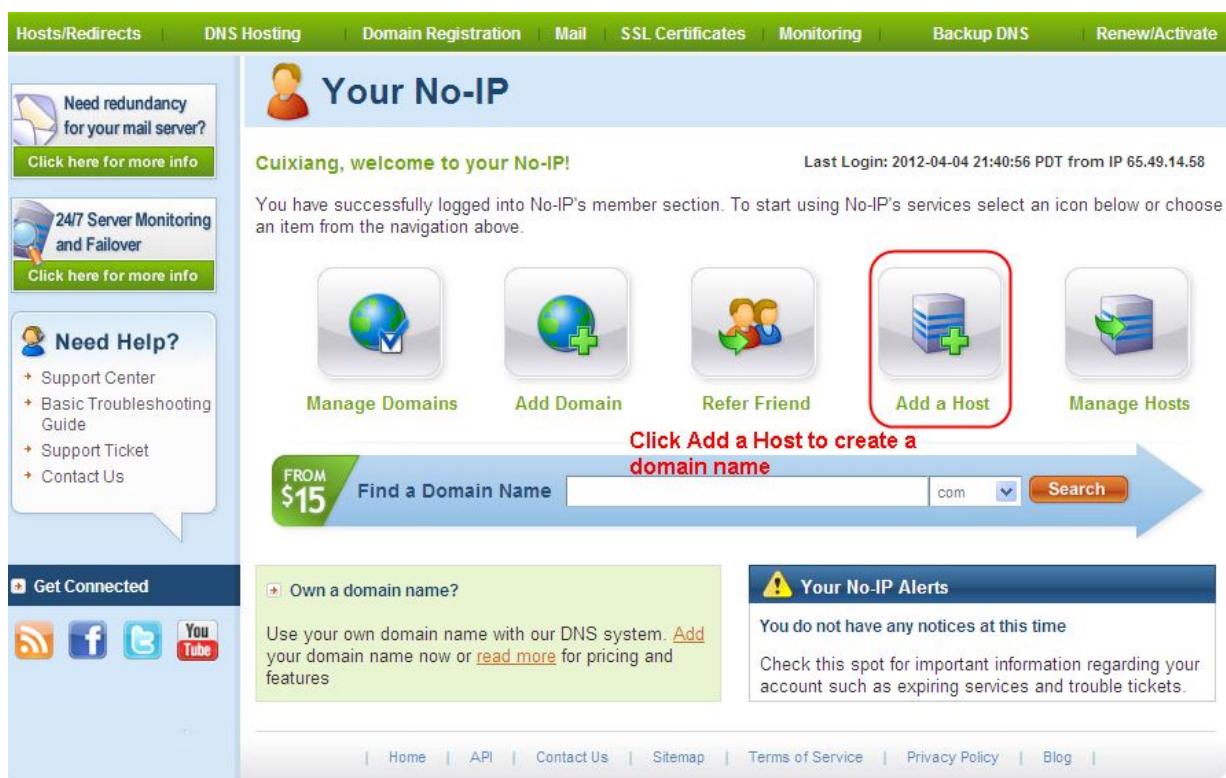


Figure 3.29

Please create the domain name step by step according to instructions on www.no-ip.com

Step 2, DO DDNS Service Settings within the Camera

Please set **DDNS Service Settings** within the camera by **hostname**, a **user name** and **password** you've got from www.no-ip.com

Take hostname **ycxgwp.no-ip.info**, user name **foscam**, password **foscam2012** for example.

Firstly, goes to option of **DDNS Service Settings** on the administrator panel.

Secondly, disable the Manufacturer's domain name and select No-Ip as a server in the **Third Party DDNS**.

Thirdly, fill **foscam** as DDNS user, fill password **foscam2012** as DDNS password, fill **ycxgwp.no-ip.info** as DDNS domain and server URL, Then click save to make effect. The camera will restart and to take the DDNS settings effective.

Fourthly, after the restart, login the camera, and go to option of **Device Status** on the administrator panel, and check if the DDNS status is successful.

If failed, please double check if you have input the correct hostname, user name, and password, and try to redo the settings.

Note

The Third Party DDNS and the Manufacturer's Domain Name cannot work at the same time. If you have set Third Party DDNS and meanwhile you enabled the Foscam Domain Name, the Third Party DDNS will take effect.

② Do port forwarding within the router

Example: The camera's LAN IP address is **http://192.168.1.35:88** ,

Firstly, login the router, goes to the menu of **Port Forwarding or Port Trigger** (or named **Virtue Server** on some brands of router). Take **Linksys** brand router as an example, Login the router, and goes to **Applications & Gaming->Single Port Forwarding**.

Secondly, Create a new column by LAN IP address & HTTP Port No. of the camera within the router showed as below.

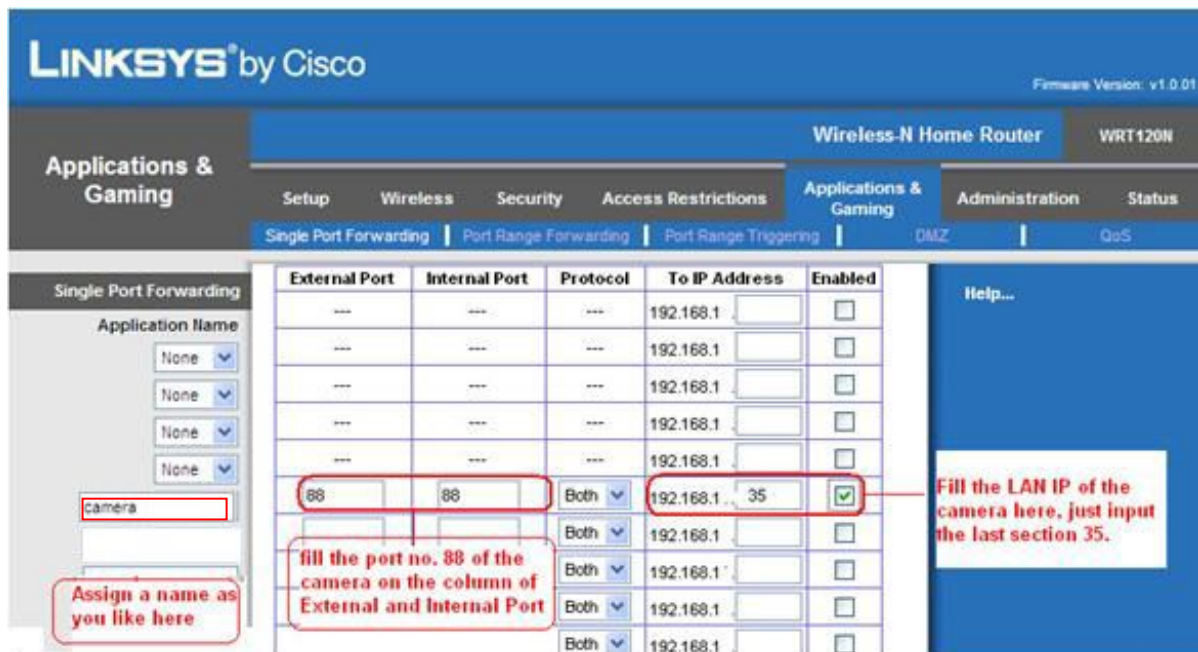


Figure 3.30

③ Use domain name to access the camera via internet

After the port forwarding is finished, you can use the domain name+ http no. to access the camera via internet. Take hostname ycxgwp.no-ip.info and http no. 88 for example, the accessing link of the camera via internet would be [http:// ycxgwp.no-ip.info:88](http://ycxgwp.no-ip.info:88)

3.11 Mail Service Settings

If you want the camera to send emails when motion has been detected, **Mail Service Settings** will need to be configured.

The screenshot shows the 'Mail Service Settings' page. On the left is a sidebar menu with options like Device Status, Alias Settings, Date & Time Settings, Users Settings, Multi-Device Settings, Basic Network Settings, Wireless LAN Settings, ADSL Settings, UPnP Settings, DDNS Service Settings, Mail Service Settings (highlighted), FTP Service Settings, Alarm Service Settings, PT Settings, Upgrade Device Firmware, Backup & Restore Settings, Restore Factory Settings, Reboot Device, Log, and Back. The main content area is titled 'Mail Service Settings' and contains the following fields:

- Sender:** cuiyao93@gmail.com (labeled 1)
- Receiver 1:** yaoyao160@sohu.com
- Receiver 2:** (empty)
- Receiver 3:** (empty)
- Receiver 4:** (empty) (labeled 2)
- SMTP Server:** smtp.gmail.com
- SMTP Port:** 25
- Transport Layer Security:** STARTTLS (labeled 3)
- Need Authentication:** ☒
- SMTP User:** cuiyao93@gmail.com (labeled 4)
- SMTP Password:** (masked with dots)
- Test:** (button, labeled 6) with text 'Please set first, and then test.'
- Report Internet IP by Mail:** ☒
- Submit:** (button, labeled 5)
- Refresh:** (button)

Figure 3.31

1----- Sender Mailbox for sender must support SMTP

2----- Receiver Mailbox for receiver need not support SMTP, you can set 4 receivers

3----- SMTP Server/ Port Enter SMTP server for sender. **SMTP port** is usually set as 25. Some SMTP servers have their own port, such as 587 or 465 and Transport Layer Security usually is None. If you use Gmail, Transport Layer Security must be set to TLS or STARTTLS and SMTP Port must be set to 465 or 25 or 587, which port you choose should be decided by which Transport Layer Security you select.

4----- SMTP user ID account of the sender email address

5-----Submit Click Submit to take effect

6-----Test Click **Test** to see if SMTP has been successfully configured.

NOTE: Click **Submit** first before choosing **Test**.

Click **Test** to see if SMTP has been successfully configured.

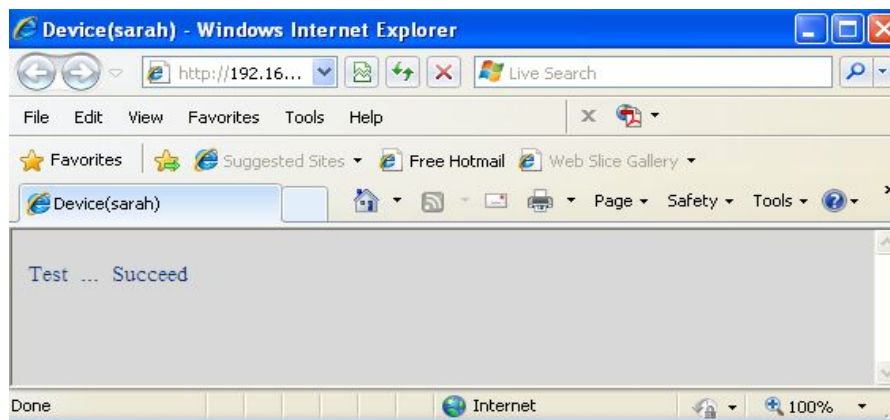


Figure 3.32

If the test fails with one of the following errors after clicking **Test**, **verify** that the information you entered is correct and again select **Test**.

- 1) Cannot connect to the server
- 2) Network Error. Please try later
- 3) Server Error
- 4) Incorrect user or password
- 5) The sender is denied by the server. Maybe the server need to authenticate the user, please check it and try again
- 6) The receiver is denied by the server. Maybe because of the anti-spam privacy of the server
- 7) The message is denied by the server. Maybe because of the anti-spam privacy of the server
- 8) The server does not support the authentication mode used by the device

Report Internet IP by Mail—If selected, you will receive emails which contains internet IP information such as When the camera is powered or the Internet IP has changed. (For example: IPCAM's urls is <http://119.123.207.96:8068>). Make sure the port is mapped to the router correctly.

3.12 FTP Service Settings

If you want to upload images to your FTP server, you can set **FTP Service Settings**.

FTP Service Settings

FTP Server	192.168.0.50
FTP Port	21
FTP User	sarah
FTP Password	••••
FTP Upload Folder	/
FTP Mode	PORT ▾
	Test Please set first, and then test.
Upload Image Now	<input checked="" type="checkbox"/>
Upload Interval (Seconds)	30
Enable Set Filename	<input checked="" type="checkbox"/>
Filename	sarah
<input checked="" type="button" value="Submit"/> <input type="button" value="Refresh"/>	

Figure 3.33

FTP Service Settings

FTP Server	ftp.mgenseal.com
FTP Port	21
FTP User	deotest@mgenseal.com
FTP Password	••••
FTP Upload Folder	/
FTP Mode	PORT ▾
	Test Please set first, and then test.
Upload Image Now	<input checked="" type="checkbox"/>
Upload Interval (Seconds)	30
Enable Set Filename	<input checked="" type="checkbox"/>
Filename	sarah
<input type="button" value="Submit"/> <input type="button" value="Refresh"/>	

Figure 3.34

FTP server: If your FTP server is located on the LAN, you can set as Figure 3.33.

If you have an FTP server which you can access on the internet, you can set as Figure 3.34.

FTP Port: Usually the port is 21.

FTP Upload Folder: Make sure that the folder you plan to store images exists as the camera can't create the folder itself. Also, the folder must be read/writable.

FTP Mode: The camera supports standard (PORT) mode and passive (PASV) mode

Upload Image Now: This option will upload images continuously when you enable the checkbox

Enable Set Filename: When you enable this option the uploaded image will be named according to the filename you enter. The next image will overwrite the filename of the previous image. Hence there will only be one image, the last uploaded.

Filename: See the above option.

Note: You cannot change the name of the alarm image.

Upload Interval refers to the time between the current image and the next image being uploaded.

Click **Submit** to save these settings. Click **Test**, the following screen displays if successful.

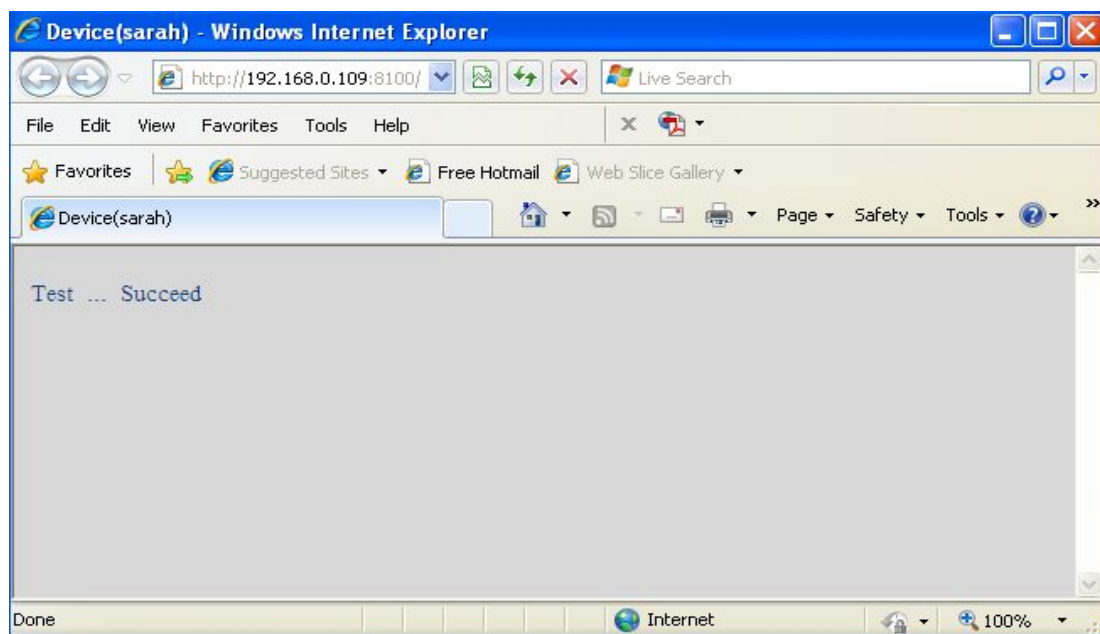


Figure 3.35

The following errors may occur:

- 1) Can not connect to the server. Check if the FTP Server is correct.
- 2) Network Error. Please try later.
- 3) Server Error.
- 4) Incorrect user or password. Check the username and password.
- 5) Cannot access the folder. Verify the folder exists and your account is authorized
- 6) Error in PASV mode. Verify the server supports PASV mode.
- 7) Error in PORT mode. PASV mode should be selected if the device is behind a NAT.
- 8) Cannot upload file. Verify your account is authorized

If an error occurs check the parameters you entered are correct. The filename format of the image is similar to 00606E8C1930(sarah)_0_20100728114350_25.jpg

Check if your FTP server supports this file name format.

3.13 Alarm Service Settings

IP Camera supports **Motion Detection Alarmed**, when the motion has been detected, it will send email alerts or upload images or record.

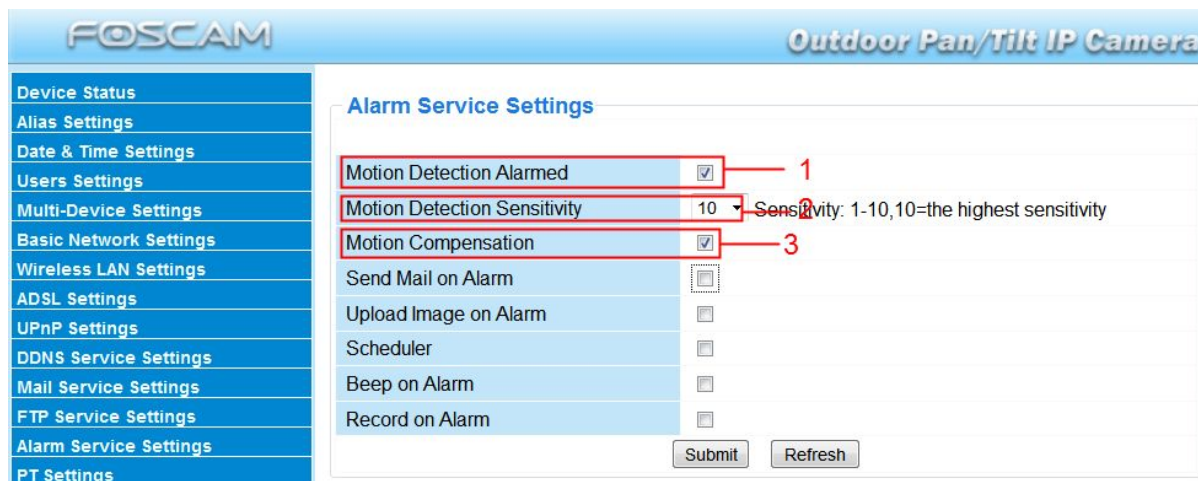


Figure 3.36

- 1---- If you want to set Motion Detection Alarmed ,select the checkbox
- 2---- The larger the number, the higher the motion sensitivity will be
- 3---- Select this option to reduce false alarms when light changes

If motion is detected after you enable **Motion Detection Armed Detection Alarmed**, the Alarm Status will turn to Motion Detect Alarm.

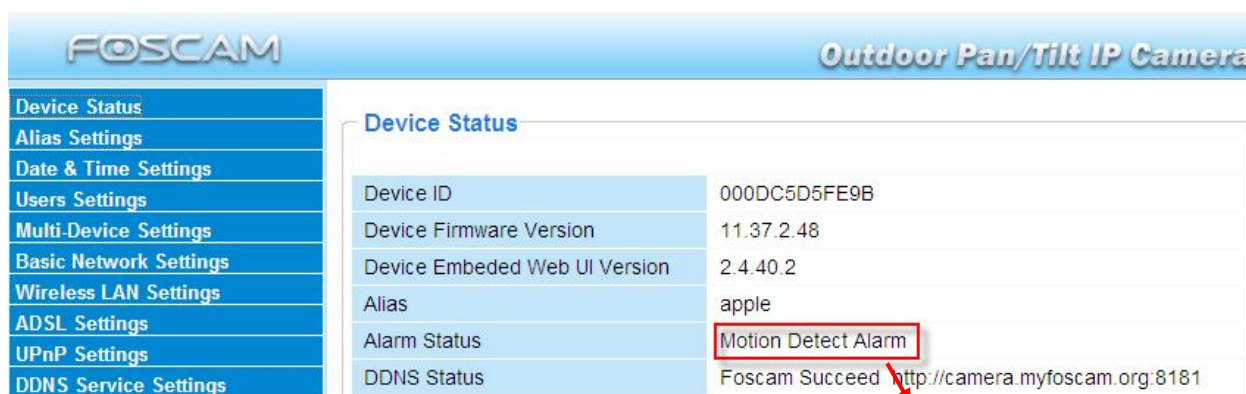


Figure 3.37

Here you can see the alarm status

There are four alarm indicators:

1) Camera will send emails when motion is activated.

If you want to receive images when motion is detected, you must set **Mail Service Settings** first. Then set motion alarm as follows:

Alarm Service Settings

Motion Detection Alarmed	<input checked="" type="checkbox"/>
Motion Detection Sensitivity	10 <small>Sensitivity: 1-10, 10=the highest sensitivity</small>
Motion Compensation	<input checked="" type="checkbox"/>
Send Mail on Alarm	<input checked="" type="checkbox"/>
Upload Image on Alarm	<input type="checkbox"/>
Scheduler	<input type="checkbox"/>
Beep on Alarm	<input type="checkbox"/>
Record on Alarm	<input type="checkbox"/>
Alarm Record Filepop	<input type="checkbox"/>

Submit Refresh

Figure 3.38

2) Upload images via FTP server when motion trigger.

To upload images to an FTP server when motion is detected, you must set **FTP Service Settings** first and then set motion alarm as pictured below

Alarm Service Settings

Motion Detection Alarmed	<input checked="" type="checkbox"/>
Motion Detection Sensitivity	10 <small>Sensitivity: 1-10, 10=the highest sensitivity</small>
Motion Compensation	<input checked="" type="checkbox"/>
Send Mail on Alarm	<input checked="" type="checkbox"/>
Upload Image on Alarm	<input checked="" type="checkbox"/>
Upload Interval (Seconds)	30
Scheduler	<input type="checkbox"/>
Beep on Alarm	<input type="checkbox"/>
Record on Alarm	<input type="checkbox"/>
Alarm Record Filepop	<input type="checkbox"/>

Submit Refresh

Select this option

Set an interval for images to upload

Figure 3.39

3) You can hear the beep sound when the alarm has been detected.

Alarm Service Settings

Motion Detection Alarmed	<input checked="" type="checkbox"/>
Motion Detection Sensitivity	10 <small>Sensitivity: 1-10, 10=the highest sensitivity</small>
Motion Compensation	<input checked="" type="checkbox"/>
Send Mail on Alarm	<input checked="" type="checkbox"/>
Upload Image on Alarm	<input checked="" type="checkbox"/>
Upload Interval (Seconds)	30
Scheduler	<input type="checkbox"/>
Beep on Alarm	<input checked="" type="checkbox"/>
Record on Alarm	<input type="checkbox"/>
Alarm Record Filepop	<input type="checkbox"/>

Submit Refresh

Figure 3.40

- 4) **The camera will record automatically for one minute after motion is detected.** You can find the recording file in the folder which you set previously.

Alarm Service Settings

Motion Detection Alarmed	<input checked="" type="checkbox"/>
Motion Detection Sensitivity	10 <small>Sensitivity: 1-10, 10=the highest sensitivity</small>
Motion Compensation	<input checked="" type="checkbox"/>
Send Mail on Alarm	<input checked="" type="checkbox"/>
Upload Image on Alarm	<input checked="" type="checkbox"/>
Upload Interval (Seconds)	30
Scheduler	<input type="checkbox"/>
Beep on Alarm	<input checked="" type="checkbox"/>
Record on Alarm	<input checked="" type="checkbox"/>
Alarm Record Filepop	<input checked="" type="checkbox"/>

Submit Refresh

Figure 3.41

When you enable motion alarm, the camera will record automatically and store the recording file to the folder you configured. This icon is used to control whether the folder opens or not.

Alarm Scheduler:

Here are two ways to set the alarm.

- 1) Alarm at any time when motion is detected.

Don't select **Scheduler**. Click Submit and the camera will alarm at any time when motion is detected.

Alarm Service Settings

Motion Detection Alarmed	<input checked="" type="checkbox"/>
Motion Detection Sensitivity	10 <small>Sensitivity: 1-10,10=the highest sensitivity</small>
Motion Compensation	<input checked="" type="checkbox"/>
Send Mail on Alarm	<input checked="" type="checkbox"/>
Upload Image on Alarm	<input checked="" type="checkbox"/>
Upload Interval (Seconds)	30
Scheduler	<input type="checkbox"/>
Beep on Alarm	<input checked="" type="checkbox"/>
Record on Alarm	<input type="checkbox"/>

Figure 3.42

Another Way: select Scheduler, and click “set All”, you will see all time boxes turn blue as in the following picture. Click Submit and the camera will alarm at any time when motion is detected.

FOSCAM Outdoor Pan/Tilt IP Camera

[Device Status](#)
[Alias Settings](#)
[Date & Time Settings](#)
[Users Settings](#)
[Multi-Device Settings](#)
[Basic Network Settings](#)
[Wireless LAN Settings](#)
[ADSL Settings](#)
[UPnP Settings](#)
[DDNS Service Settings](#)
[Mail Service Settings](#)
[FTP Service Settings](#)
[Alarm Service Settings](#)
[PT Settings](#)
[Upgrade Device Firmware](#)
[Backup & Restore Settings](#)
[Restore Factory Settings](#)
[Reboot Device](#)
[Log](#)
[Back](#)

Motion Detection Alarmed	<input checked="" type="checkbox"/>
Motion Detection Sensitivity	10 <small>Sensitivity: 1-10,10=the highest sensitivity</small>
Motion Compensation	<input checked="" type="checkbox"/>
Send Mail on Alarm	<input checked="" type="checkbox"/>
Upload Image on Alarm	<input checked="" type="checkbox"/>
Upload Interval (Seconds)	30
Scheduler	<input checked="" type="checkbox"/>
Beep on Alarm	<input checked="" type="checkbox"/>
Record on Alarm	<input type="checkbox"/>

Set	00	01	02	03	04	05	06	07	08	09	10	11	12	13	14	15	16	17	18	19	20	21	22	23
Clear	00	01	02	03	04	05	06	07	08	09	10	11	12	13	14	15	16	17	18	19	20	21	22	23
Day	0	1	2	3	4	5	6	7	8	9	10	11	12	13	14	15	16	17	18	19	20	21	22	23
Sun																								
Mon																								
Tue																								
Wed																								
Thu																								
Fri																								
Sat																								

Figure 3.43

2) Specify an alarm schedule.

If you want the camera to alarm during set times select **Scheduler** and set time range.

If you want to select one serial area, you can click any number between 00 and 23 on the first row, the corresponding column will be selected and it will turn blue. For example, click the number “06” on the first row, you can see the column turn blue. That means the camera will

alarm when motion is detected between 6 and 7 o'clock every day. Click the number "06" on the second row, you can cancel the corresponding column you set. And it will turn grey.

FOSCAM Outdoor Pan/Tilt IP Camera

Device Status
Alias Settings
Date & Time Settings
Users Settings
Multi-Device Settings
Basic Network Settings
Wireless LAN Settings
ADSL Settings
UPnP Settings
DDNS Service Settings
Mail Service Settings
FTP Service Settings
Alarm Service Settings
PT Settings
Upgrade Device Firmware
Backup & Restore Settings
Restore Factory Settings
Reboot Device
Log
Back

Motion Detection Alarmed ☒
 Motion Detection Sensitivity 10 Sensitivity: 1-10,10=the highest sensitivity
 Motion Compensation ☒
 Send Mail on Alarm ☒
 Upload Image on Alarm ☒
 Upload Interval (Seconds) 30
 Scheduler ☒
 Beep on Alarm ☒
 Record on Alarm ☐

set All clear All

Set	00	01	02	03	04	05	06	07	08	09	10	11	12	13	14	15	16	17	18	19	20	21	22	23
Clear	00	01	02	03	04	05	06	07	08	09	10	11	12	13	14	15	16	17	18	19	20	21	22	23
Day	0	1	2	3	4	5	6	7	8	9	10	11	12	13	14	15	16	17	18	19	20	21	22	23
Sun																								
Mon																								
Tue																								
Wed																								
Thu																								
Fri																								
Sat																								

Submit Refresh

Figure 3.44

If you want to select discrete area, you click the left button on the box of time range. It will turn blue. If you want to delete it, just click the left button and it will turn grey.

FOSCAM Outdoor Pan/Tilt IP Camera

Device Status
Alias Settings
Date & Time Settings
Users Settings
Multi-Device Settings
Basic Network Settings
Wireless LAN Settings
ADSL Settings
UPnP Settings
DDNS Service Settings
Mail Service Settings
FTP Service Settings
Alarm Service Settings
PT Settings
Upgrade Device Firmware
Backup & Restore Settings
Restore Factory Settings
Reboot Device
Log
Back

Motion Detection Alarmed ☒
 Motion Detection Sensitivity 10 Sensitivity: 1-10,10=the highest sensitivity
 Motion Compensation ☒
 Send Mail on Alarm ☒
 Upload Image on Alarm ☒
 Upload Interval (Seconds) 30
 Scheduler ☒
 Beep on Alarm ☒
 Record on Alarm ☐

set All clear All

Set	00	01	02	03	04	05	06	07	08	09	10	11	12	13	14	15	16	17	18	19	20	21	22	23
Clear	00	01	02	03	04	05	06	07	08	09	10	11	12	13	14	15	16	17	18	19	20	21	22	23
Day	0	1	2	3	4	5	6	7	8	9	10	11	12	13	14	15	16	17	18	19	20	21	22	23
Sun																								
Mon																								
Tue																								
Wed																								
Thu																								
Fri																								
Sat																								

Submit Refresh

Figure 3.45

3.14 PT Settings

You can set pan/tilt speed. Normally, PT speed is 3. The larger the setting number, the lower speed. Don't enable the checkbox "disable preset" if you want to use the function of preset, it will be effective after you reboot device.

PT Settings	
Disable preset	<input checked="" type="checkbox"/>
Go to center on boot	<input checked="" type="checkbox"/>
PT speed	3
Upward patrol speed	3
Downward patrol speed	3
Leftward patrol speed	3
Rightward patrol speed	3
Patrol rounds horizontal	2
Patrol rounds vertical	2

Speed: 0---15,fast---slow

Submit Refresh

Figure 3.46

Patrol rounds horizontal: Set the round between 1 and 10, then click Submit. Back to surveillance window. Click the Horizon patrol button, the camera will patrol the rounds horizontally you set and then stop if you don't click Stop horizon patrol button. For example, you set 4 for the patrol rounds. Click submit and back to surveillance window. Click the Horizon patrol button and do not click the Stop horizon patrol button, the camera will patrol 4 rounds and then stop automatically.

Patrol rounds vertical: Set the round between 1 and 10, then click submit. Back to surveillance window Click the Vertical patrol button, the camera will patrol the rounds vertically you set and then stop if you don't click Stop vertical patrol button.

3.15 Upgrade Device Firmware


When you upgrade the camera, please upgrade system firmware first and then upgrade the Web UI.



Figure 3.47

Click **Browse**, choose the correct bin file and then click **Submit** to upgrade.
Don't shut down the power during upgrade until the Equipment Search Tool finds the camera again.

Upgrade Firmware by Equipment Search Tool

Double click the Equipment Search Tool shot icon , select the Camera IP that you want to upgrade the firmware. Then select Upgrade Firmware and enter the username and password, choose the firmware file, and upgrade.

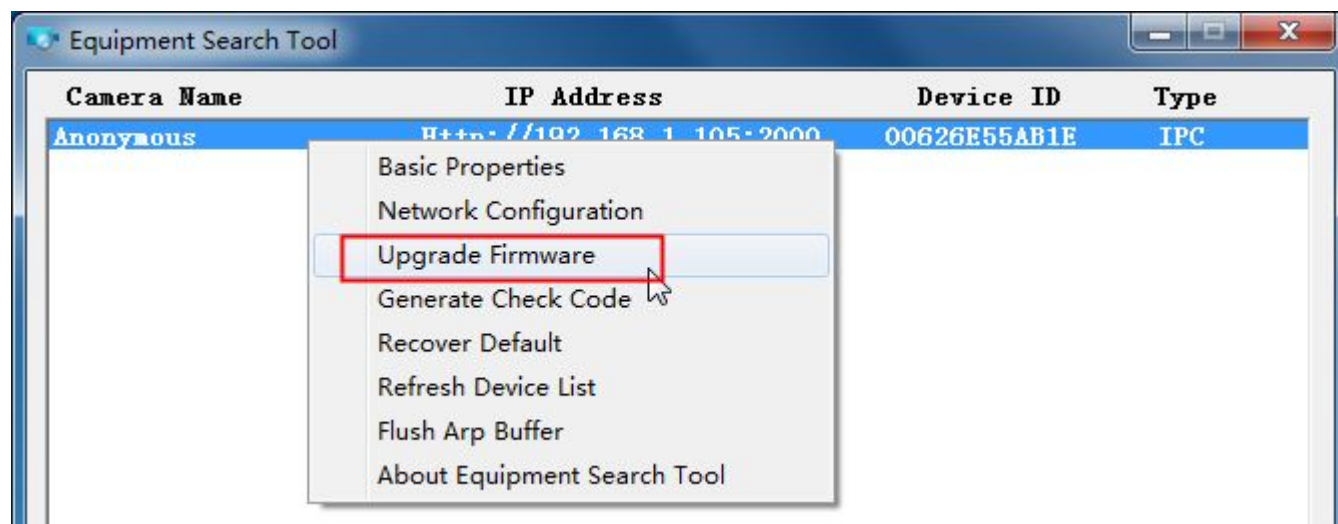


Figure 3.48

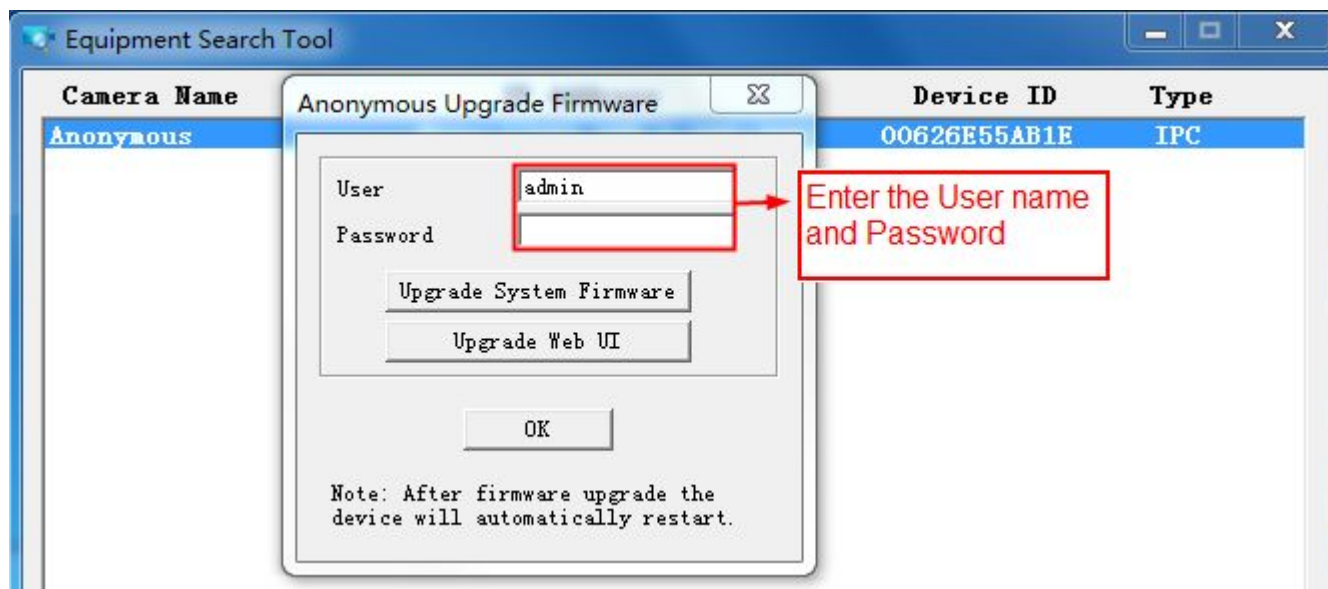


Figure 3.49

CAUTION: If your camera works well with the current firmware, we recommend not upgrading. Please don't upgrade the firmware unnecessarily. Your camera may be damaged if misconfigured during an upgrade.

NOTE:

- 1) Please ensure you have download the correct firmware package for your camera before upgrading. Read the upgrade documentation (readme.txt file) in the upgrade package before you upgrade.
- 2) Upon downloading the firmware check the sizes of the .bin files. They must match the size in the readme.txt file. If not, please download the firmware again until the sizes are the same. Your camera will not function correctly if a corrupt .bin file is used.
- 3) Normally, only Device WEB UI need to be upgrade, please do not try to upgrade the Device Firmware.
- 4) Never shut down the power of the camera during upgrade until the IP camera restart and get connected.

3.16 Backup & Restore Settings

Click **Submit** to save all the parameters you have set. These parameters will be stored in a bin file for future use. The bin file can be reloaded to restore the parameters that were set.

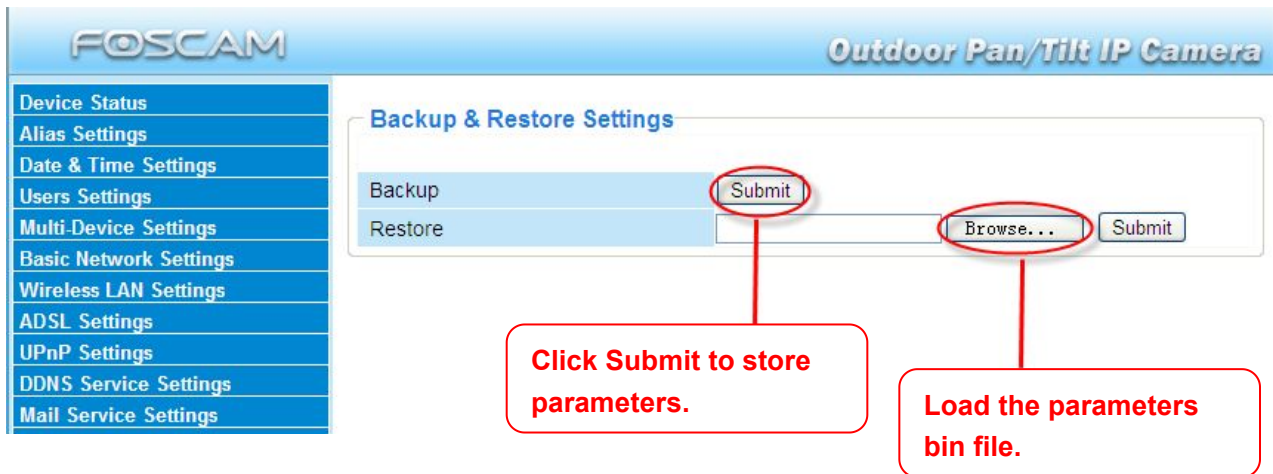


Figure 3.50

3.17 Restore Factory Settings

All parameters will return to factory settings if selected.

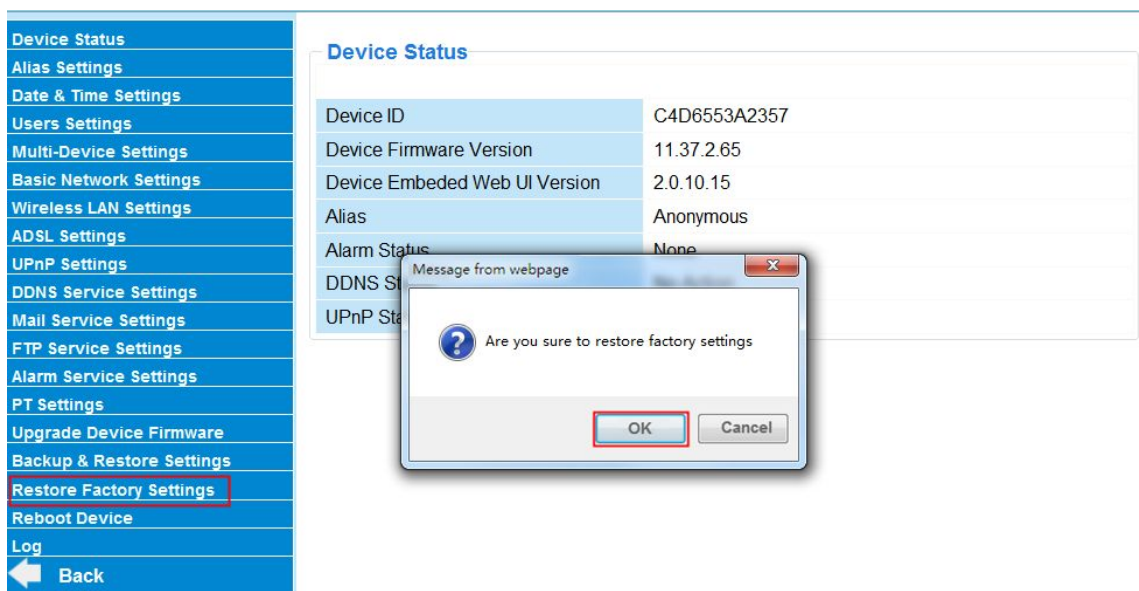


Figure 3.51

3.18 Reboot Device

Click **Reboot Device** to reboot the camera. This is similar to unplugging the power to the camera.

3.19 Log

The log record shows who accessed the camera and when.

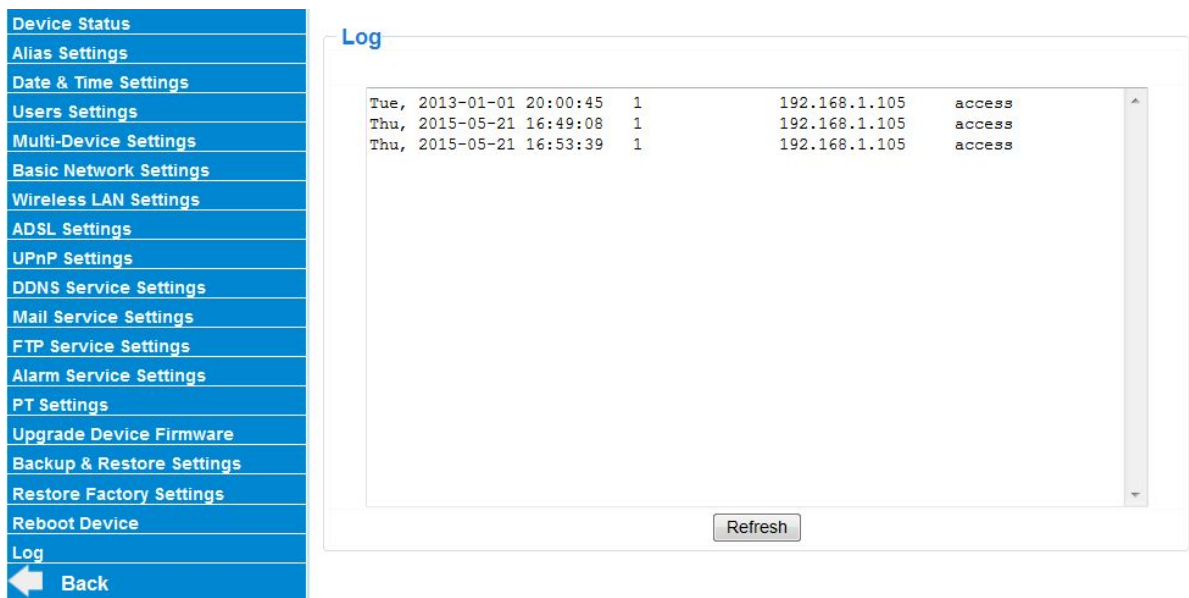


Figure 3.52

3.20 Back

This will take you back to the surveillance window.



4 APPENDIX

4.1 Frequently Asked Questions

NOTE: Always verify network connections are working by checking the status of the indicators on the network server, hub and network card.

4.1.1 I have forgotten the administrator username and/or password

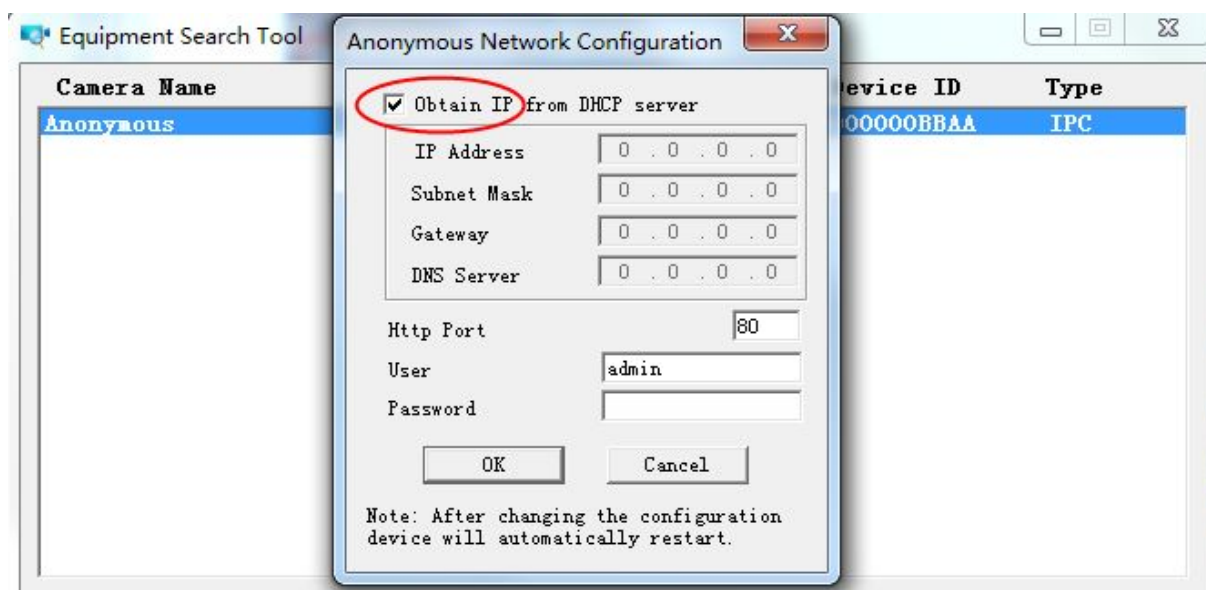
To reset the administrator username and password, press and hold down the RESET BUTTON for 10 seconds. Upon releasing the reset button, the username and password will return to the factory default administrator username and password. Please power on the camera before reset

Default administrator username: **admin**

Default administrator password: No password

4.1.2 Subnet doesn't match, dbclick to change

If the Equipment Search Tool shows the error “Subnet doesn't match, dbclick to change!”, select **Obtain IP from DHCP server**.



If this error still exists after obtaining an IP from the DHCP server, check the local area connection of your computer and verify the subnet and gateway of the camera which should be the same subnet of your computer.

4.1.3 No Pictures Problems

Video streaming is managed by the ActiveX controller. If the ActiveX controller isn't installed correctly you will see no video image. There are two ways to resolve this problem:

- 1) Reinstall “Equipment Search Tool” and ActiveX controller (recommended) .
- 2) Download ActiveX controller and set the security setting of IE: IE browser → Tool → Internet Proper → Security → Custom Level → ActiveX control and Plug-ins. The first three options of front should be set to be “Enable”, The ActiveX programs read by the computer will be stored. As follows:

Enable: Download unsigned ActiveX controls

Enable: Initialise and script ActiveX controls not marked as safe

Enable: Run ActiveX controls and plug-ins

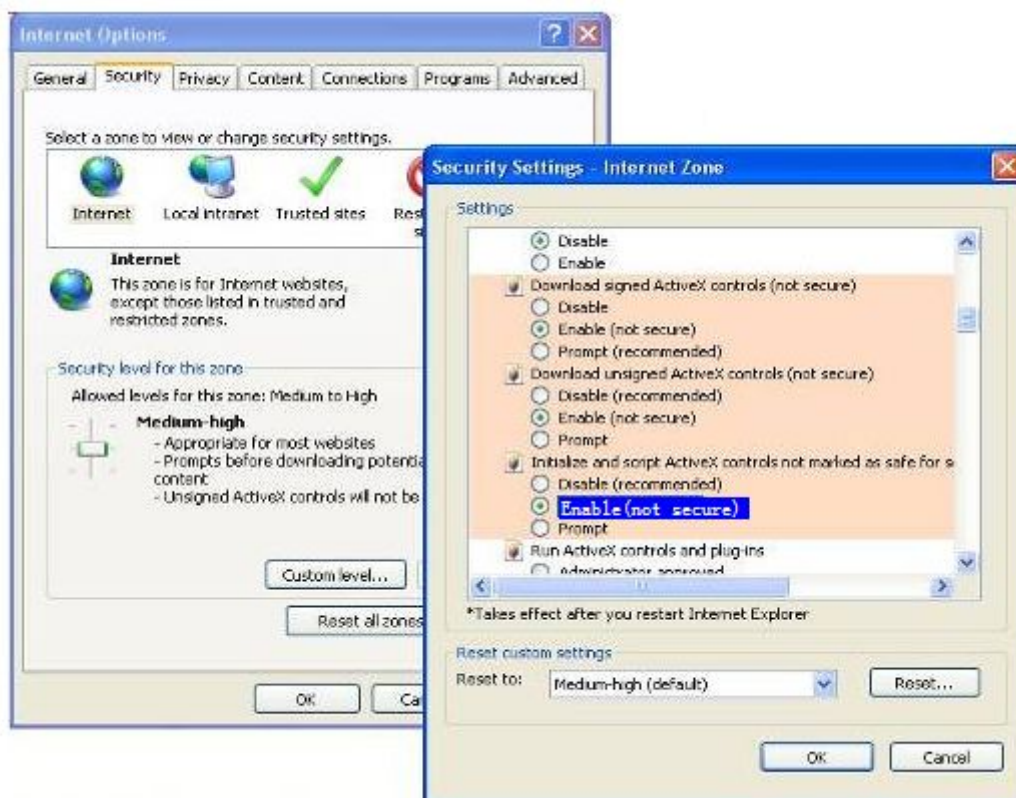


Figure 4.1

If you allow the ActiveX to run, but still can not see living video and a red cross in the centre of the video. Please select another port number. Don't use port 80, use port 85, 8005.etc.

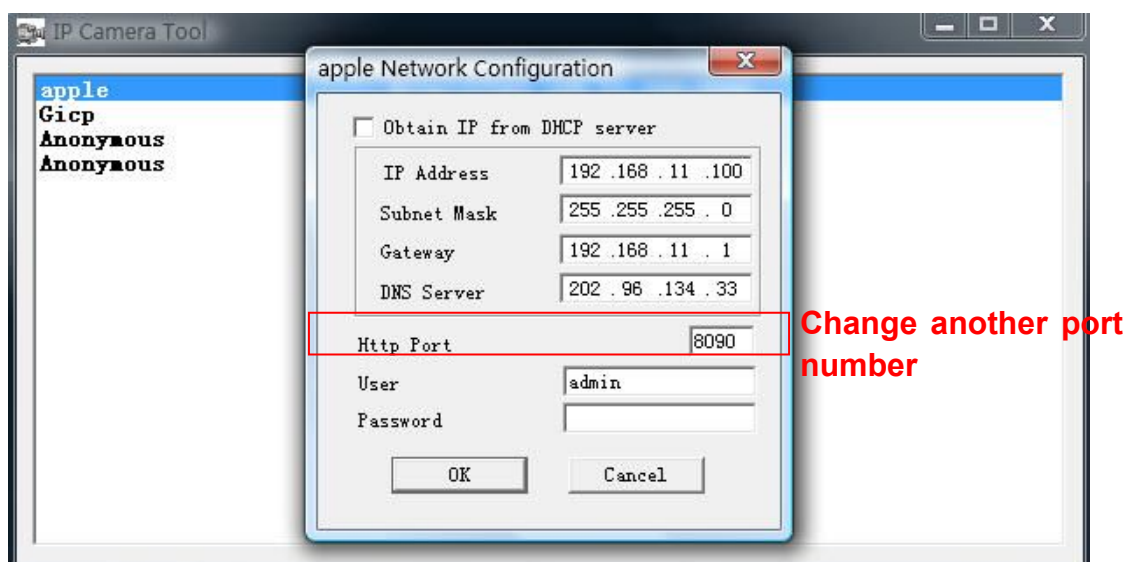


Figure 4.2

NOTE: Make sure that your firewall or anti-virus software does not block the camera or ActiveX. If you cannot see live video, try shutting down the firewall or anti-virus software and try again.

4.1.4 Can't access IP camera on internet

Possible reasons why camera is not accessible on the internet:

- 1) ActiveX controller is not installed correctly
 - 2) The port which the camera uses is blocked by a Firewall or Anti-virus software. Try changing to another port number.
 - 3) Port forwarding is not successful .
- Double check these settings and make sure they are correct.

4.1.5 Equipment Search Tool could not find camera's IP

Verify that the network cable is securely fastened to the camera.
 Make sure that DHCP is enabled on your router, do not enable MAC address filter.
 Make sure that the firewall or anti-virus software does not block the camera. You can add the camera as a trusted site on your firewall or anti-virus software.

4.1.6 UPnP always failed

UPnP only contains port forwarding in our recent software. Sometimes, it may be fail to do port forwarding automatically because of the firewall or anti-virus software. It may also be due to the router's security settings. We recommend manually configuring port forwarding the camera can be viewed on the internet.

4.1.7 Couldn't find the shortcut on the desktop after install Equipment Search Tool

If you use Windows7 or Vista and the shortcut is missing after installing the Equipment Search Tool , check the path of IP Camera program.
 For example, if it was pointing to C:\Windows\System32\IPCamera.exe.
 Please fix this by pointing the shortcut to the correct path
C:\Windows\SysWOW64\IPCamera.exe. After this you should be able to use the shortcut without any problems.

4.1.8 I can't change the record path

When you use Windows7 or Vista, you may be not able to change the record path because of the security settings of computer. Please add the camera as a trusted site to resolve this issue.
 The steps are
 IE browser→Tool→Internet Properties→Security→Trusted sites→Sites→Add

4.1.9 I can't find multi-device settings and record icon

Record and multi-device functionality are controlled by the ActiveX controller.
 These functions are not available in Firefox, Google Chrome and Safari.

4.1.10 Camera cannot connect using wireless

If your camera cannot connect wirelessly after you set the wireless settings, unplug / plug the power cable. (for more details: **Wireless LAN settings** in **chapter 3.7**)

Usually, camera can't connect wireless mainly because of incorrect settings.

Verify that the SSID is correct; use the same encryption for router and camera. Share key should not contain special characters, only word and number will be better. Disable MAC address filtering.

4.1.11 Can't see other cameras listed in multi-device when using remote access

If you want to view all the cameras via the WAN, verify that each camera added in the multi-device settings can be accessed by using the DDNS name and port number. Use the DDNS domain name not the camera's LAN IP. (For more details see: How to add cameras in WAN)

4.1.12 Only see black screen or undefined characters when using remote login

If you could access the login page remotely, this indicates that your DDNS settings are correct. If you are unable to see live video but only some undefined characters, this may be due to the internet speed issues or the camera using Wi-Fi.

4.2 Default Parameters

Default network Parameters

IP address: obtain dynamically

Subnet mask: 255.255.255.0

Gateway: obtain dynamically

DHCP: Disabled

DDNS: Embedded FOSCAM domain name

Username and password

Default administrator username: **admin**

Default administrator password: No password

4.3 Specifications

ITEMS		FI8919W
Image Sensor	Image Sensor	Color CMOS Sensor
	Display Resolution	640 x 480 Pixels(300k Pixels)
	Lens	f: 4mm, F:2.4
	Mini. Illumination	2Lux
Lens	Lens Type	Glass Lens
	IR_CUT	Filter will switch automatically
	Angle of View	Horizontal:40° Diagonal :45°
Video	Image Compression	MJPEG
	Image Frame Rate	15fps(VGA),30fps(QVGA)
	Flip Mirror Images	Vertical / Horizontal
	Light Frequency	50Hz, 60Hz or Outdoor
	Video Parameters	Brightness, Contrast
Communication	Ethernet	One 10/100Mbps RJ-45
	Supported Protocol	HTTP,FTP,TCP/IP,UDP,SMTP,DHCP,PPPoE,DDNS,UPnP
	Wireless Standard	IEEE 802.11b/g/n
	Wireless Security	WEP & WPA & WPA2 Encryption
	Infrared Light	22 IR LEDs, Night visibility up to 15 meters
	Dimension	230(L) x140(W) x250(H)
	Net Weight	1800g
Power	Power Supply	DC 12V/2.0A (EU,US,AU adapter or other types optional)
	Power Consumption	<12Watts
Environment	Operating Temperature	-20° C ~ 60° C (-4° F ~ 140° F)
	Operating Humidity	20% ~ 85% non-condensing
	Storage Temperature	-20° C ~ 60° (-4° F ~ 140° F)
	Storage Humidity	0% ~ 90% non-condensing
PC Requirements	CPU	2.0GHZ or above
	Memory Size	256MB or above
	Display Card	64M or above
	Supported OS	Windows, MAC, Android, iOS
	Browser	IE8 and above version ; Firefox; Chrome;Safari.
Certification	CE, FCC, RoHS	
warranty	Limited 2-year warranty	

4.4 Statement

You are advised to be cautious in daily life, keep personal account information carefully, do not share personal account easily. Change passwords of your account and equipment periodically, and upgrade equipment firmware to strengthen security consciousness.

Our company makes no warranty, implied or otherwise, that this product is suitable for any particular purpose or use. You need to abide by the relevant laws and regulations of the use restrictions when using Foscam cameras. Our company takes no responsibility of illegal activities by using our products.

Our company takes no responsibility of the loss by force majeure, such as failure or faults of telecom system or the Internet network, computer viruses, malicious attacks of hackers, information damage or loss, and faults of computer system.

Foscam company does not need to take any responsibility of the special, incidental or corresponding loss by the products of our company or any software provide by our company, including but not limited to operating loss, profit or purpose. The company only takes the responsibility applicable to national and local legal requirements.

Our company takes no responsibility of the loss caused by the following at any time:

- 1) loss of purchases;
- 2) loss of intangible property damage, such as data, programs;
- 3) loss of compensation claimed by third-party customers.

Delete images, format the memory card or other data storage devices does not completely remove the original image data. You can restore deleted files from discarded the storage device by commercial software, but which will potentially lead to personal image data used maliciously by others. The privacy of the data security belongs to user responsibility, the company takes no responsibility.

Parts mentioned in this statement should not be understood by the configuration description of the product purchased by the customer, the product configuration must accord to the specific models purchased by the customer.

Without the prior written permission of Foscam company, all the contents of relevant operating instructions manual affiliated to the product must not be reproduced, transmitted, transcribed or stored in a retrieval system, or translated into other languages.

Our company will reserve the right to improve and modify the product and corresponding manuals. The company reserves the right of final interpretation on our products.

5 OBTAINING TECHNICAL SUPPORT

While we hope your experience with the IPCAM network camera is enjoyable and easy to use, you may experience some issues or have questions that this User's Guide has not answered. If you have problem with FOSCAM IP camera, please first contact FOSCAM reseller for solving the problems. If our reseller cannot provide service, pls contact our service department: tech@foscam.com.



CE Certificate Website: <http://www.foscam.com/company/ce-certificate.html>